

# Golden Bay Social Report

September 2005



Prepared by the Golden Bay Workcentre Trust  
For  
Ministry of Social Development  
Family and Community Services  
Nelson – Marlborough District Health Board

## Golden Bay Social Report - Contents

Executive summary .....	4
What is a Social Report? .....	5
Why a social Report for Golden Bay? .....	5
Brief overview of Golden Bay .....	5
Population .....	6
Golden Bay Usually Resident Population Data 1991 – 2004 .....	7
Trends in GB Population Growth .....	7
Population Predictions .....	8
Age Bands .....	9
Proportions of under 15 and over 65 year olds .....	9
Ethnic Composition of the Bay .....	10
Deprivation Indices .....	10
Households .....	11
Employment .....	12
Percentage workforce participation 15 years and older .....	12
Incomes .....	13
Government Benefits .....	14
Trends in Benefit Numbers 1991 -2005 .....	15
Total benefit expenditure in Golden Bay – week ending 27 <sup>th</sup> February 2004 .....	16
Ethnicity of Beneficiaries .....	16
Duration on main benefits .....	17
Safety and Security .....	17
G.B Reported Crime by offender gender source NZ Police .....	17
G.B Youth offending as a proportion of reported crime .....	18
G.B Reported crime by category source NZ Police .....	18
Road Safety .....	18
Education and training .....	19
Early Childhood Education .....	19
Estimated number of 0 – 4 year olds 2001 -2016 .....	20
Primary and Secondary Education .....	20
Class Sizes in Golden Bay Schools – July 2004 .....	21
Home Schooling .....	22
Career pathways .....	22
Training Opportunities and Youth Training .....	23
Health Status .....	24
Suicide .....	25
Disability .....	25
Disability by age and gender .....	25
The health care system .....	25
Current Health Services .....	26
Birth from a Golden Bay Domicile .....	26
Primary Medical Care .....	26
Population number per General Practitioner .....	27
Fees for patients enrolled with GB Medical Centre .....	27
Other Services .....	27
Mental Health Services and Support .....	28

Integrated Health Service Proposal.....	28
summary of services currently being provided in golden bay .....	29
mental health services currently being provided in golden bay.....	30
public health services currently being provided in golden bay .....	31
disability support services currently being provided in golden bay .....	31
Community Support Services .....	32
Heartlands Services.....	32
Golden Bay Community Workers .....	32
Recreation Co-coordinator.....	32
Student and Family Support Worker.....	32
Homebuilders .....	33
Food bank.....	33
St Vincent de Paul .....	33
Informal Support Networks .....	33
Youth Worker.....	33
Youth Transition Worker .....	33
Youth Issues.....	34
Housing .....	35
Affordability .....	35
Trend in Golden Bay Median Prices 2001 – 2005.....	36
Relative median Prices in Tasman District .....	36
Market Rent Information October 2004 – March 2005 .....	37
Lack of Security .....	37
Impact on the local economy .....	38
Cost of living .....	38
Pump prices for Fuel.....	38
Community Connectedness.....	39
Phone and Internet access .....	39
Voter participation by TDC Ward .....	39
Sport and Physical activity .....	40
Sport participation.....	40
Cycling and walking .....	40
Community Volunteers .....	40
An interpretation of the findings of the Golden Bay Social Report.....	41
Information sources and acknowledgements .....	44

## Executive Summary

The Golden Bay Work Centre Trust was contracted by Ministry of Social Development, Family and Community Services and the Nelson Marlborough District Health Board to compile a Social Report for Golden Bay.

The report shows that the population is increasing, and is driven primarily by migration. The favoured growth prediction indicates a population increase of 1000 people by 2026. Most growth has been in eastern Golden Bay with minimal population growth in Takaka even though it remains the main service centre.

The population is aging, with the median age increasing to 48 by 2026 - the number of 0-4 year olds will peak in 2011 and then fall. It is predicted that there will be a large increase in the number of people over 80.

There are more couples without children and a higher number of sole parents than the rest of the Tasman district.

Primary industry is still the biggest employer, although the biggest areas of employment growth has been in self employment with over 150 new businesses established, however the government sector remains a major employer. Tourism is a key driver of the local economy. Visitor numbers have risen dramatically but it is still a very seasonal and unpredictable industry.

Income is lower than the rest of Tasman and there is little spare capacity in the labour market which already struggles to meet seasonal demand. Beneficiary numbers are low and there are only a small proportion of long term beneficiaries. Even so Government benefits, including superannuation pump nearly \$6,000,000 into the local economy annually.

The Bay is a very safe community to live in with low crime rates, and high resolution rates. Youth crime is not increasing although the number of young women offending has increased.

There is a shortage of childcare facilities, with waiting lists for nearly every session at the only registered childcare facility, which could impact on the labour market.

All schools achieve well, with good ERO reports and student outcomes, although the level of community contributions required to maintain educational opportunities is a concern. As roll numbers fall it will be a challenge to maintain the range of subjects and activities. There are now career pathways available within the Bay, especially in agriculture.

There is a very good range of health and disability services although there is no current or future capacity to support an increasing number of elderly residents.

Mental Health services are a good example of an innovative approach to service delivery and although there is a good range of community support services a more integrated approach may be more effective.

The availability of affordable housing is a major issue and it is having an impact on the local economy. The amount spent on accommodation supplement is increasing and is distorting the rental market.

Golden Bay is an active community and supports a wide range of community and voluntary groups, however, reliance on volunteers could challenge some key services as the population ages.

## **What is a Social Report?**

A Social report describes the health and well being of a community by presenting information across a range of indicators to draw a picture of community well being. By having baseline data available it is also possible to identify changes over time and recognize trends.

The criteria for information is that it needs to be robust, and compatible with other regional or national statistics and information, to enable comparisons to be made with other areas. The aim is to provide an information base to assist central and local government agencies, and community and voluntary organizations and to inform future social and economic development planning. The Ministry of Social Policy produced the first national Social Report in 2001 and this is now an annual publication.

## **Why a social Report for Golden Bay?**

As part of the regular Golden Bay Community and Whanau meetings, it became apparent that perceived needs in the Bay did not always fit comfortably within nationally determined programme priorities and criteria.

The development of a social profile for Golden Bay is intended to inform future planning. Information is required to not only identify possible gaps in services but also to provide a baseline for evaluating the effectiveness of any future investments in service provision in Golden Bay. This report draws together information from Statistics New Zealand, Central and Local government sources, and community organizations to provide a Social profile of Golden Bay.

It is intended that the Golden Bay Social report will fit into a future Tasman District Community report and also assist in the development of Social Outcomes for the Tasman District LTCCP. The format is based on both the Kaikoura Social Wellbeing report and the MSD Social Report, therefore the format is intended to be complementary to a district wide exercise

## **Brief overview of Golden Bay**

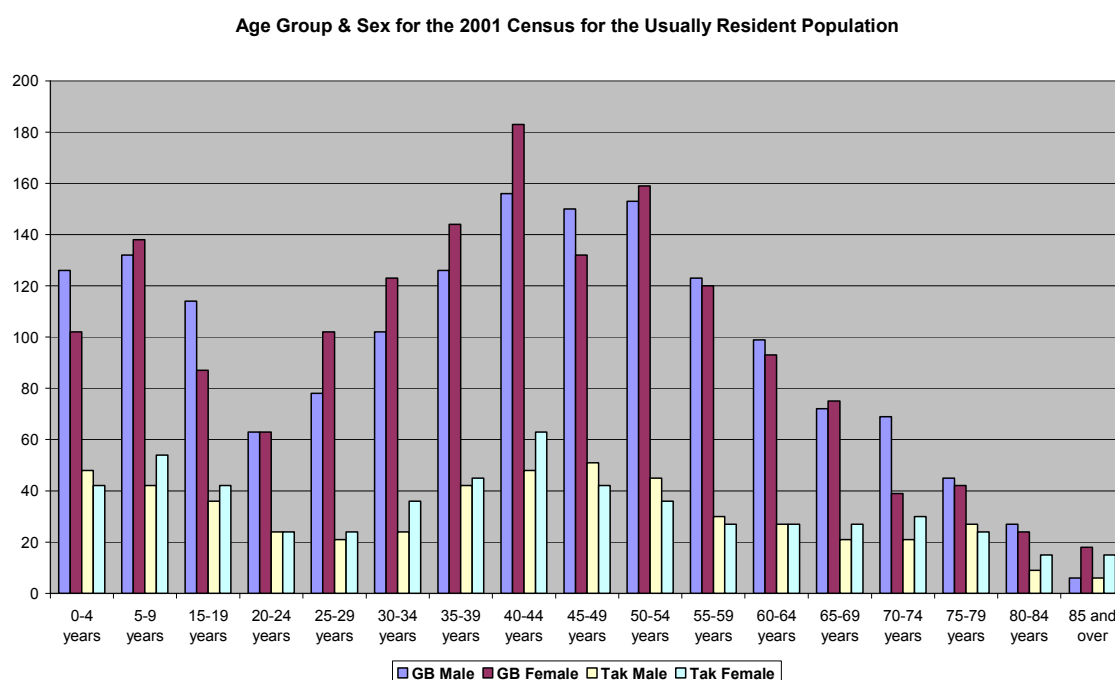
Golden Bay is a predominantly rural community situated in the north western corner of the South Island. The Bay is geographically defined by the sea to the west and north, and mountain ranges to the south and east. There is only one road into the Bay, over the Takaka Hill. Although Golden Bay is often portrayed as isolated, the main township of Takaka is approximately 1hour 40 minutes from Nelson. This traveling time to a main centre is less than from Kaikoura to Blenheim or Christchurch, or from Murchison to Westport or Nelson. It is possible to be in central Wellington from Takaka in 2.5 hours. Although Golden Bay is separate from the rest of Tasman / Nelson it cannot be considered an isolated community relative to other areas in the Nelson /Marlborough / West Coast region. Separateness brings its own challenges, especially in defining what is an appropriate level of service for a small rural area, but the Bay is a vibrant and resourceful community, and this report is intended to highlight those areas that are working well.

Almost 70% of the land area of Golden Bay is managed by Dept. of Conservation, including Abel Tasman and Kahurangi National Parks. A predominantly rural community, there are a string of coastal settlements along the coastal strip from Pūponga to Tata Beach, with scattered settlement in the Takaka and Aorere river valleys. The main township is Takaka, with other

significant settlements at Collingwood and Pohara. There are more remote areas within the Bay, primarily around Mangarakau and south down the coast, with a traveling time of up to 1.5 hours to Takaka; but these are sparsely populated .

Part of the West Coast Tasman Electorate, Golden Bay is a separate ward within the Tasman District. . Until the early eighties Golden Bay was predominantly a rural farming community, with the Dairy factory and Golden Bay Cement Co being the most significant employers. There was also a seasonal tourist industry based primarily on beachfront camping grounds. Since then the Cement Works has closed and although still underpinned by dairying and milk processing the economy has diversified with growth in tourism and aquaculture and a developing service sector.

## Population



How many people live in Golden Bay and how old they are have a direct influence on the provision and funding of social and community services. Economies of scale seldom apply in rural communities, yet funding for the provision of Health and Education services is primarily linked to funding formulae based on the Nelson Tasman population base.

The main data source for population is the 5 yearly census of population and dwellings undertaken by Statistics NZ. The last census was conducted in March 2001, so definitive figures of the current population will not be available until the 2006 census.

Tasman District is one of the fastest growing regions in the country. Between 1996 and 2001 the districts population grew by 12% to 42,639. Statistics NZ project a 30% increase in population of 12,700 by 2026, to a total population of 55,100. This increase is not evenly spread, but is concentrated along the coastal fringe of the district.

Golden Bay has experienced population growth higher than previous projections. The 1993 Golden Bay Regional Development Study prepared by Works Consultancy included Department of Statistics population estimates.

This predicted an increase in population based on high growth variants to 5118 people by 2011. This figure has already been exceeded. The most up to date assessment of the Golden Bay Ward population is the June 2004 estimated total from Statistics NZ. This figure is based on the 2001 census with adjustments for undercounting, residents away on census night, births, deaths, and net migration. This indicates a resident population of 5180.

Information from the census collected in Meshblocks and is then aggregated into Area Units. Golden Bay comprises two area units, Takaka, which includes Central Takaka, Dodsons Rd, Three Oaks and Rototai, and Golden Bay, which is everywhere else. TDC has done some more detailed analysis on a sub area unit basis, with the Takaka figure in the table below comprising just the township.

#### **Golden Bay Usually Resident Population Data 1991 – 2004**

	<b>1991 Census</b>	<b>1996 Census</b>	<b>2001 Census</b>	<b>2004 estimate</b>	<b>Increase 1991 -2004</b>
<b>Collingwood</b>	159	195	246	300	141
<b>Pohara</b>	405	516	912	1030	625
<b>Takaka</b>	858	858	891	900	42
<b>Rural Golden Bay</b>	2826	3129	2742	2910	124
<b>Total</b>	4248	4698	4791 / 4910*	5180	932

Source Stats NZ /TDC

\* There is an interesting anomaly in the 2001 figures, with a variance of 119 between the usually resident population total from the census, and the June 2001 estimate of 4910. Statistics NZ base their Community Profile analysis on the 4791 total, yet their population predictions are taken from the June 30 estimated resident population. This can be attributed to adjustments made due to a significant increase in net annual migration, starting in 2000 and peaking in 2002, when nationally there was a net population gain of 38,200.

#### **Trends in GB Population Growth**

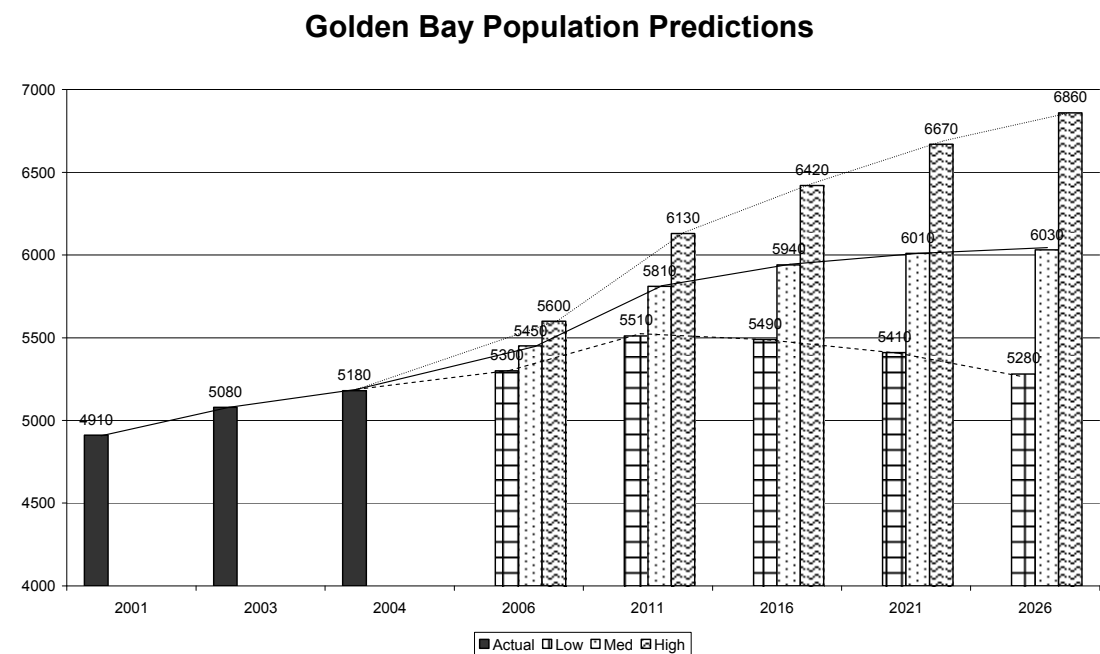
- Minimal population growth in Takaka, net gain of only 42 people over 13 years, possibly due to flooding risk constraining subdivision.
- Increase in population in Collingwood - growth no longer constrained by lack of sewage scheme.
- 67% of population growth between 1996 -2001 in the Pohara / Ligar Bay/ Tata Beach areas. Primary older residents.
- Population growth not linked to employment opportunities, with retirement and lifestyle key drivers.
- External migration major contributor to population growth

Predicting future population growth is challenging due to the range of external variables. There is a pattern of seasonal occupancy in some coastal settlements with a recent TDC survey showing only 58 of 238 properties in Patons Rock, Parapara, Milnthorpe, Totara Avenue and Pakawau being permanently occupied dwellings. Similarly in the Pohara area the Clifton –Tata survey indicated 20% of dwellings were owned by non resident ratepayers, yet 36% of these property owners were intending to move to the Bay in the next 10 years.



Golden Bay is perceived as a relatively unspoilt and safe ‘lifestyle’ destination by some migrants. Global issues affect migration and settlement, with both the threat of terrorism, and the relative value of the NZ dollar affecting migration patterns.

Population Predictions



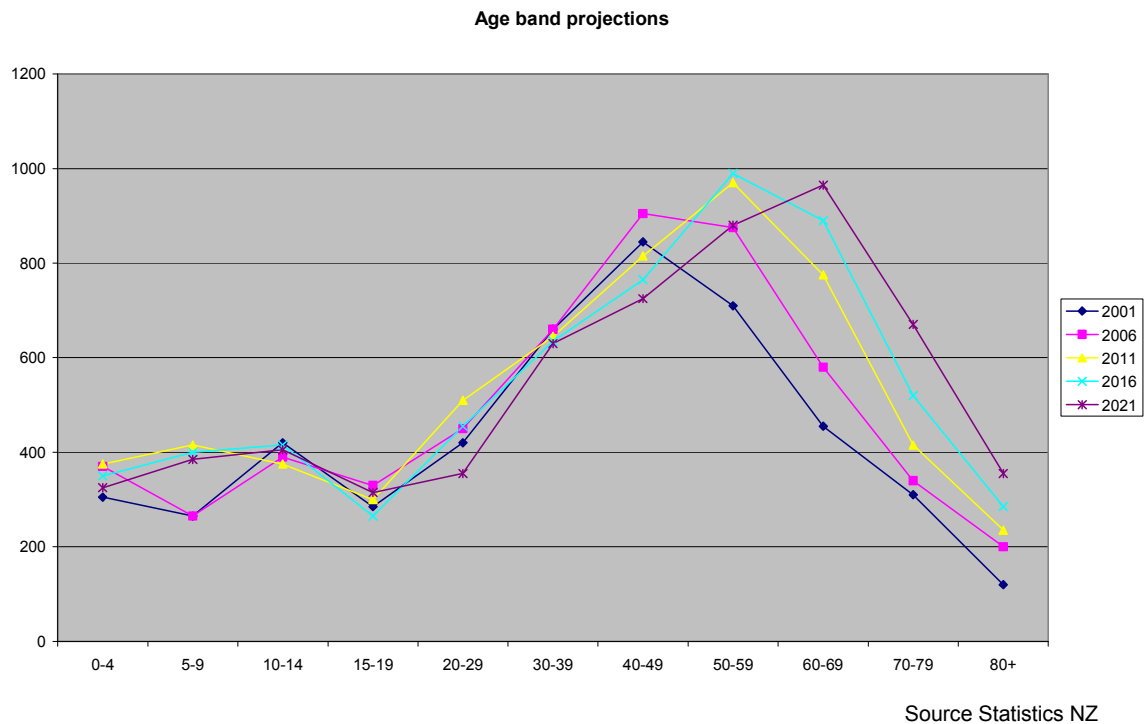
Source Statistics NZ

The preceding table shows the potential variation in population predictions until 2026, based on high medium and low population growth models. Current thinking from Statistics New Zealand favours the 5B series of medium fertility and mortality with a national annual net migration figure of 10,000. However there is a potential population variance of 1580 people, with the low growth scenario indicating a population increase of only 100 people over 22 years.

Whatever the growth rate Golden Bay will experience some significant demographic changes. Some of these will be reflections of national trends, such as a decline in average household size and an increase in the number of couples without children. The area with the most implications for social and community services will be the change in the numbers of people in different age bands.



## Age Bands



*These age band projections are based on the medium population projection figures. They illustrate an aging community, with the median age increasing by 10 years to 48 by 2026, higher than the national median of 40. Preschool numbers peak in the next 5 years and then decline to lower than current levels by 2016. There is a dramatic increase in the number of people over 80 years old which has major implications for the provision of appropriate health and social support services.*

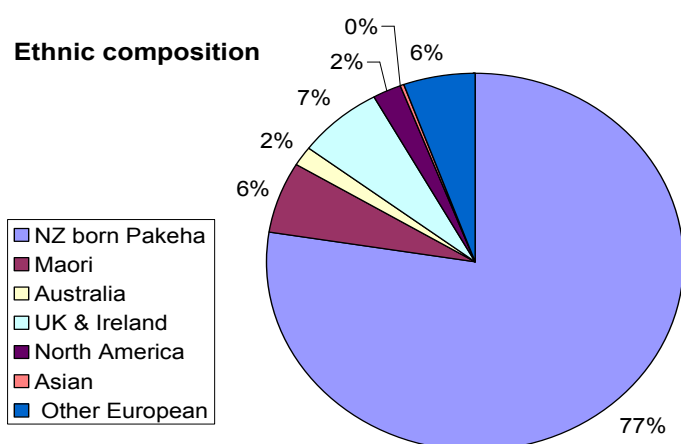
### Proportions of under 15 and over 65 year olds

	<b>Tasman</b>	<b>Takaka</b>		<b>Golden Bay</b>		<b>New Zealand</b>	
	<b>2001</b>	<b>2001</b>	<b>2011</b>	<b>2001</b>	<b>2011</b>	<b>2001</b>	<b>2011</b>
<b>% under 15</b>	23	22.0	19.8	22.1	20.0	22.7	19.0
<b>% over 65</b>	15.8	16.4	19.2	11.7	19.8	12.1	14.0

## Ethnic Composition of the Bay

The composition of the community is also changing, although New Zealand born Pakeha still form the majority of the population an interesting feature is the number of overseas born residents as a proportion of the population (17%). Apart from one area unit in Outer Motueka this is the highest in Tasman, which ranges from 7% in Murchison to 12.5 % in Richmond . There are significant population blocks from the UK, Germany, Holland and North America.

The Tasman region has the highest proportion of people identifying with the European ethnic group in the whole of New Zealand (96.2%). And this is mirrored in Golden Bay. People identifying as Maori (Note that census respondents can identify with more than one ethnicity.) make up 6% of the population compared to 14.7% of the national population. There are three Iwi with Manawhenua status, Te Atiawa, Ngati Tama, and Ngati Rarua, who work collaboratively as Manawhenua Ki Mohua to represent a Maori perspective. The diversity of the community was identified by two thirds of the respondents in the



respondents can identify with more than one ethnicity.) make up 6% of the population compared to 14.7% of the national population. There are three Iwi with Manawhenua status, Te Atiawa, Ngati Tama, and Ngati Rarua, who work collaboratively as Manawhenua Ki Mohua to represent a Maori perspective. The diversity of the community was identified by two thirds of the respondents in the

Vision 2022 report as something they liked about living in Golden Bay.

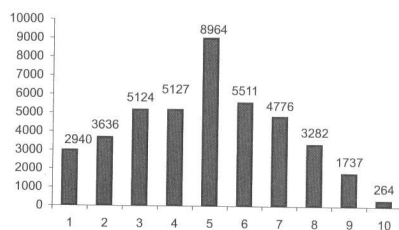
## Deprivation Indices

An overview of the relative social health of communities is the Deprivation Index. (NZDep) This is a social mapping tool that aggregates nine variables derived from the 2001 census.

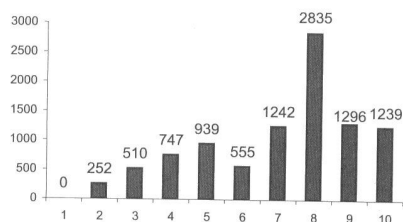
Deprivation Type	Description: Proportions of people in small areas
Income	<i>Aged 18-59 receiving a means tested benefit</i>
Employment	<i>Aged 15-19 unemployed</i>
Income	<i>Living in households with equivalized income below an income threshold</i>
Communication	<i>With no access to a telephone</i>
Transport	<i>With no access to a car</i>
Support	<i>Aged less than 60 living in a single parent family</i>
Qualifications	<i>Aged 15-19 without any qualifications</i>
Living Space	<i>Living in households above equivalised bedroom occupancy threshold</i>
Owned home	<i>Not living in own home</i>

The index scales deprivation from 1 – least deprived to 10 – most deprived, an average of the NZ population would show roughly equal numbers of people living in areas at each level of deprivation.

**Tasman District**



**Buller District**



These two charts compare deprivation scores in Tasman and Buller from the 2001 census and show the number of households in each decile.

Deprivation indices are available for two statistical units in Golden Bay. Takaka comprising the township (including Central Takaka, Rototai and Three Oaks) and the rest of Golden Bay.

Both units have an aggregate score of 6. This is the same aggregate score as the 1996 census, although the range has narrowed from 4 – 9 to 4 -8, indicating less deprivation. However this does not measure deprivation of individual households.

Source: NZ Dep 2001

There is research evidence that demonstrates a strong linkage between increasing NZDep scores and increased mortality. Asthma, lung cancer, heart disease and diabetes are all more prevalent in areas with high NZDep scores. There is also an association with smoking rates and domestic fire deaths.

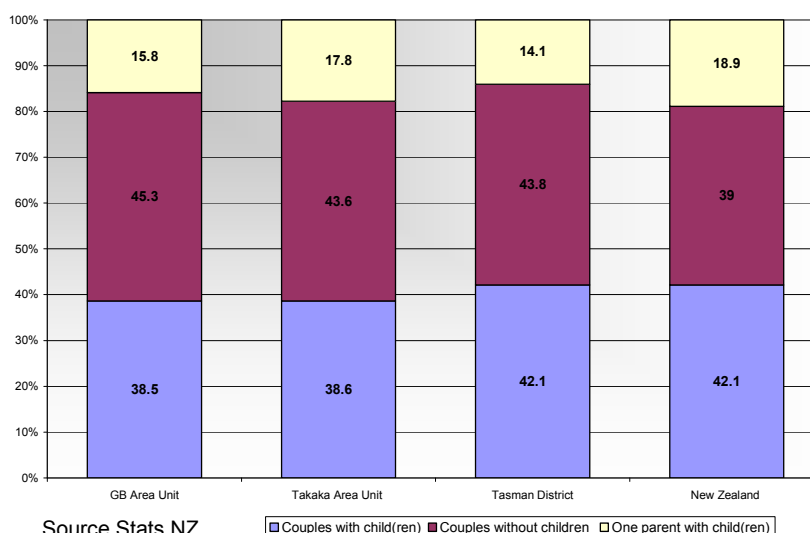
NZDep mapping is not as detailed in rural areas but there is not the concentration of high scores in Golden Bay that is apparent in, for example, Motueka East or the Victory area of Nelson.

A caveat is that NZDep data is now four years old, however in that time unemployment rates have dropped, yet housing for those on low incomes has become less affordable.

## Households

The 2001 census recorded 1845 households in Golden Bay, and 1269 families.

**Family Type**



The majority of households still comprise two adults, with or without children, although the higher number of couples living alone reflects the aging population. There are slightly more sole parent households than the rest of

Tasman , but less than the New Zealand average.  
There are a higher number of retired people in the Takaka township, - 25% of households, with one or more superannuitants compared to 17% in the rest of Golden Bay.

### Employment

The percentage of people engaged in the workforce increased between 1991 and 2001 to a 61% participation rate in Golden Bay and 59% in the Takaka Area unit, this is lower than the Tasman average of 64%. The Takaka figure of 59% is indicative of the higher number of superannuitants in the township.

### Percentage workforce participation 15 years and older

	1991	1996	2001
<b>Takaka</b>	49	56	59
<b>Golden Bay</b>	54	60	61
<b>Tasman</b>			64

Source Stats NZ

Agriculture and related primary industries are still the main employers. Although employment in this sector has declined across the region between census periods Golden Bay still has a higher proportion of employment in Primary industry than the rest of the Tasman District. Fishing has declined with poor scallop harvests for the last two years, although there is potential for significant growth in employment in Aquaculture.

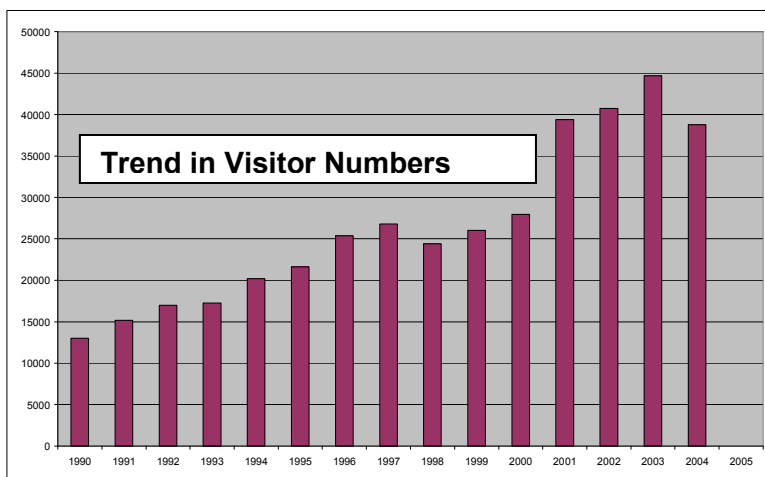
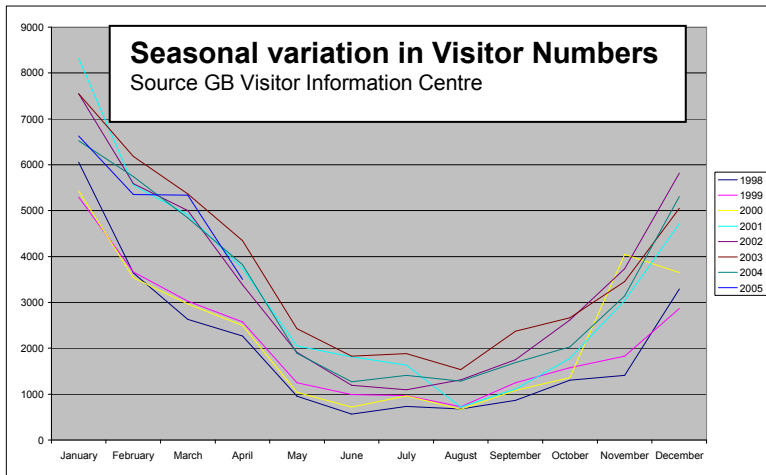
Immigration has been a key driver of the local economy, this has created a boom in construction and related trades, and also strengthened a growing service sector.

Census year	1991	1996	2001
<b>Tasman % Primary industry</b>	33	33	24.4
<b>GB % Primary Industry</b>		31	26.8

Source Stats NZ

There are approximately 2950 people engaged in the Golden Bay workforce, 2290 as employees and 660 as self employed. The biggest private employers in the Bay are (approximate numbers in brackets, some seasonal variation) Sollys Freight (60) Reynishes Supervalve ( 50), Fonterra (50) The proportion of the workforce in self employment has remained relatively constant over the 1991 - 2001 period at between 22% and 23% of the workforce, numerically this equates to 150 new small businesses starting up over the ten year period. The government funded sector is a major employer, health services (70+), The Ministry of Education (90), Dept of Conservation (30), (42) Work and Income and NZ Post (9).

Tourism is a growing contributor to the local economy, although there is a big seasonal variation in the number of people employed. Awaroa Lodge has a core staff off 22 but this increases to 50 for the summer. The Wholemeal Café, one of the biggest visitor related businesses doubles its workforce from 15 to 30 during the summer period, and Dept of Conservation also takes on 29 seasonal staff. Some tourism related businesses close down for between one and three months in the winter.

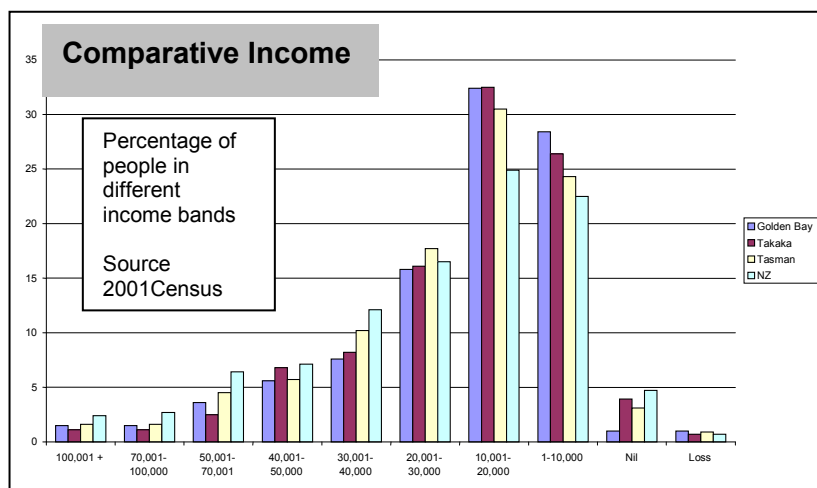


The 'season' is always unpredictable, although visitor information statistics indicate that it is extending beyond the peak Christmas period through to April /May . The relative value of the NZ Dollar, the availability of cheap airfares, and the weather all influence visitor numbers. Other businesses also have fluctuations in their labour requirements with casual or short term staff required for the peak of the dairy season, the scallop season (although this has had limited impact on the labour market for the last two years due to poor harvests), mussel spatting, and fruit picking and pruning, (although most Kiwifruit growers now hire fruit-picking gangs from other areas rather than employ local people).

These seasonal peaks create problems for both employers and employees. With the unemployment register at a historic low there are limited potential employees available, and lack of temporary accommodation for seasonal workers especially in the tourist industry makes it harder for businesses to attract staff.

## Incomes

The primary source for income data is the 2001 census, updates are only available on a regional basis. The most recent figures indicate that the average weekly income in the Tasman region was \$489 to the year ending 2003, this was a 2.5% increase over the previous 12 months. The graph below compares



Bay incomes with both Tasman and the rest of New Zealand. They indicate a higher proportion of people in the lower income bands, although this is individual income and includes those who only work part-time.

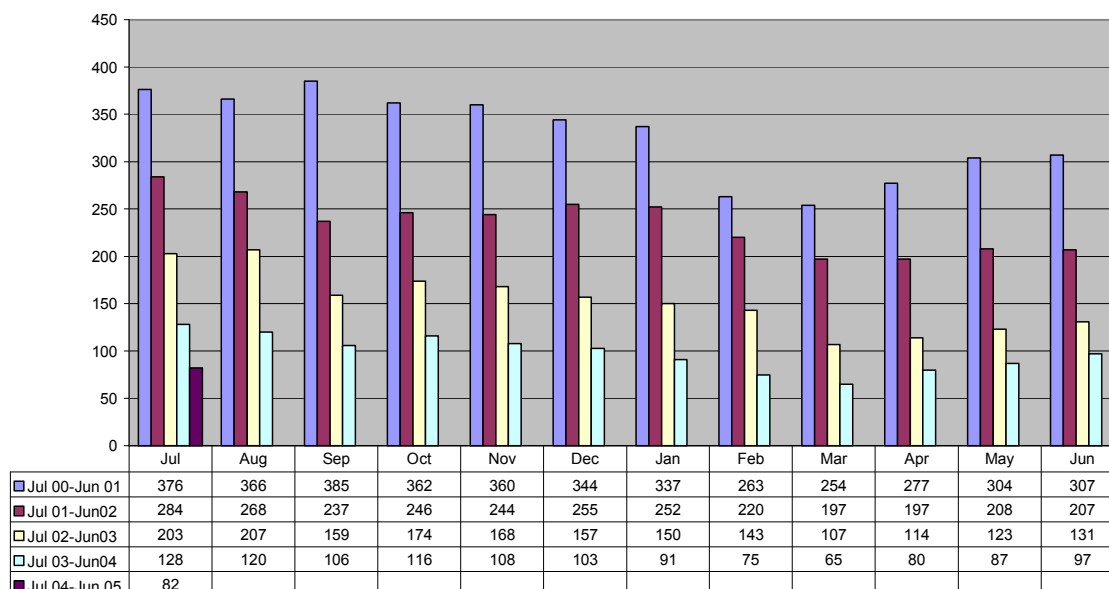
Median annual individual income was \$14,800 in Takaka and \$14,500 in Golden Bay. Which is lower than the Tasman District median of \$16,100.

Median figures are distorted by people who only work part time or those who declare a loss from self employment. A better indicator is the 2001 household expenditure survey which indicates average spending per household of \$34,682 in Takaka and \$36,579 in Golden Bay, this compares with the Tasman average of \$43,682. The 2003 report by Jenny Randall on Housing Need in Golden Bay quotes median hourly pay rates in 2003 as \$10.50 to \$13.00. Work and Income estimates that this figure has increased to between \$12.00 and \$13.00. A survey by Fanselow Bell in Nelson indicated that some jobs in the Nelson Marlborough region paid 7-15% less than the general market.

### Government Benefits

Work and Income New Zealand is the biggest social support agency operating in Golden Bay administering 13 different types of benefits. Work and Income also manages non beneficiary assistance for low income families and special needs grants, and administers much of the *Working For Families* package, a government initiative that provides extra financial support for families, and additional social support such as increased childcare subsidy rates. In early 2004 most of the Bay, excluding Takaka township, was officially designated a 'Limited Employment Location', (this formalized the previous Remote Area Policy.) Which meant that people on work tested benefits (primarily Unemployment Benefit) might would lose their benefit entitlement if they moved into an LEL area as they would be deemed to have made themselves unavailable for work. This did not apply to those already living in these areas. This has had an effect on the numbers of people applying to register, especially in the January – March period.

### Golden Bay Registered Unemployed



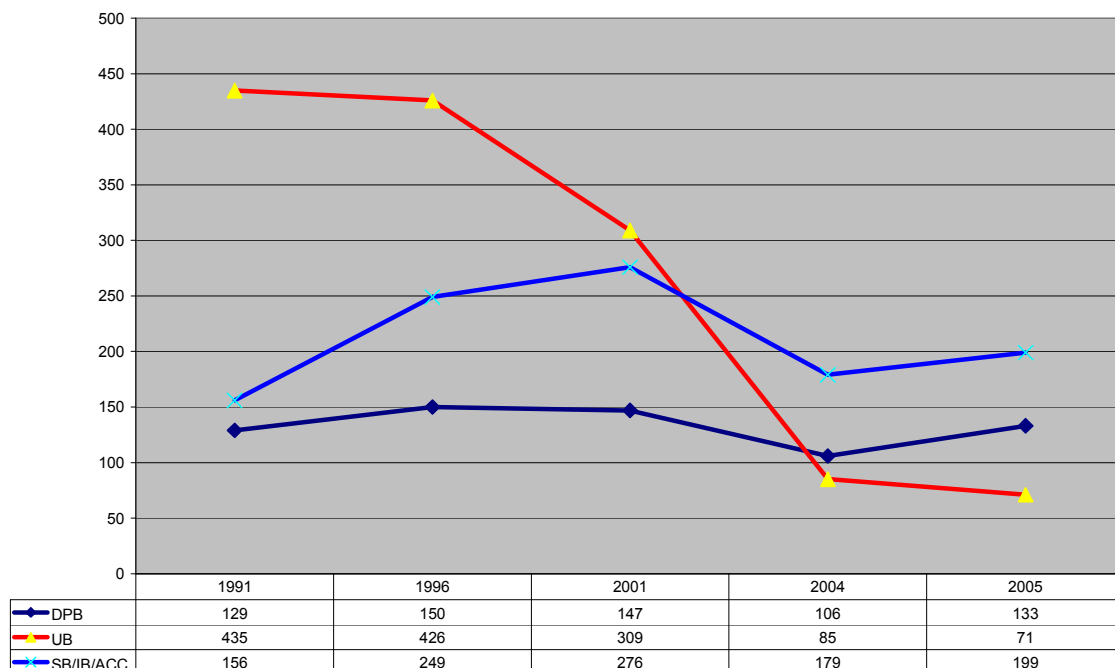
Source Work and Income

The unemployment rate in Golden Bay has been tracking down for the last 5 years, with the register down from a high of 385 in September 2000. The above graph show the seasonal nature of the labour market with unemployment falling during the summer season.

Currently (Aug 05) the Nelson region has the lowest unemployment rate in the country at 2.3 %. This is reflected in the Takaka figures with only 48 people in receipt of unemployment benefit.

There is not a clear match between those registered and jobs available, there is a skills shortage in the Bay, especially for tradespeople, often exacerbated by high housing costs, where people accept a job and then cannot find affordable accommodation.

### Trends in Benefit Numbers 1991 -2005



Source Work and Income / ACC

(Note that the SB /IB figure includes long term ACC claimants receiving weekly compensation) This table illustrates the trend over time for the main benefit categories. The GB figures mirror a national trend where as unemployment falls more intensive case management identifies barriers to people participating in the workforce and some people are more correctly placed on a sickness benefit. The number of Domestic purposes beneficiaries has remained relatively constant, even though the population has increased.

National Superannuation is a universal benefit with an age threshold, it is the biggest expenditure category, and makes a significant contribution to the local economy. Numbers in receipt of national super vary ranging from a high of 675 in 1991 to 567 in February 2004. The actual amount varies depending on individual circumstances, with recipients eligible for a range of supplementary payments depending on their needs and circumstances, but can include an accommodation supplement, disability allowance and special needs assistance.

To put this in perspective the approximate amount of national Superannuation paid in Golden Bay annually is \$6,000,000 – one and a half times more than the \$4,000,000 wage bill of the Fonterra Dairy factory before the fire. It is also half of the total benefit expenditure in the Bay



## Total benefit expenditure in Golden Bay – week ending 27<sup>th</sup> February 2004

(24<sup>th</sup> June 05 recipient numbers in brackets where available)

Benefit Type	No of Recipients	Weekly value \$
National Superannuation	567	118,537.71
DPB Sole parent	106)	37,229.12
DPB Woman Alone	7 ) (133)	1,117.74
DPB Caring for sick or infirm	4 )	835.2
Invalids benefit	107 (103)	32,210.95
Unemployment benefit	85 (71)	17,882.70
Sickness benefit	72 (81)	16,998.25
Widows benefit	12 (13)	2751.22
Emergency maintenance	3	1,175.29
Unemployment benefit-training	4 (8)	769.40
Emergency benefit	1 (8)	209.09
Non beneficiary Assistance	31 (54)	1376.46
Independent youth benefit	(2)	
<b>Total</b>	<b>999</b>	<b>\$ 231,193.63</b>
<b>Total excluding superannuation</b>	<b>432</b>	<b>\$ 112,655.92</b>

The Working for families package was rolled out in April 2005. This enabled lower income families to access non-benefit support, hence the big increase to 54 recipients. 25 families also accessed Childcare subsidies. It is hard to make year on year comparisons about the total value of benefits paid in Golden Bay due to the increased eligibility, and inflation adjustments to benefit rates.

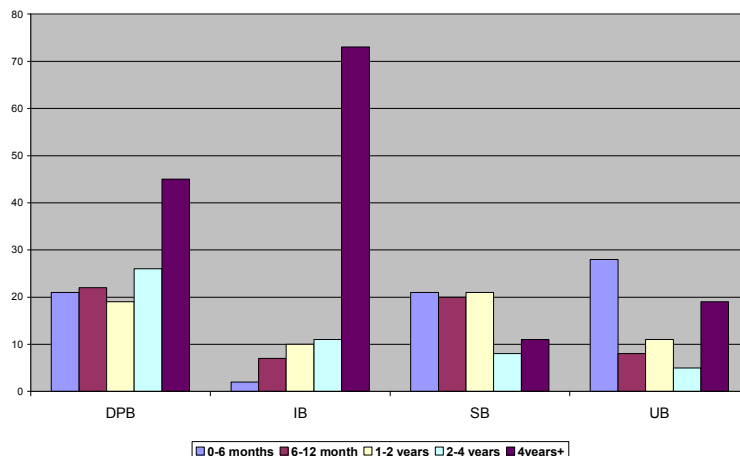
The overall number of beneficiaries excluding non beneficiary assistance and childcare subsidies increased by 18, although unemployment bucked seasonal trends and continued to fall. The total value of benefits paid in the week of 24<sup>th</sup> June 2005 increased to \$142,991.75. This equates to an annual figure between \$12,500,000 and \$13,500,000 depending on beneficiary numbers and supplementary payments.

Housing is addressed as a separate topic but Takaka township has been classified as an 'area 4' for the purpose of the Accommodation Supplement, with qualifying families eligible for an increased supplement of \$120/week, whilst rural Golden Bay remains an 'area 3', with an entitlement to \$75/week. The Working for Families initiative has widened the number families eligible for accommodation supplement. At the 24<sup>th</sup> June 2005 Accommodation supplement paid in Golden Bay totaled \$10,886 per week, equivalent to \$566,072 per year. This is a reflection of low wages and high housing costs, and although some of this assists with mortgage costs it is still a considerable direct transfer to the private sector.

### Ethnicity of Beneficiaries

The ethnicity of Beneficiaries is not in proportion to their relative makeup in the community. The perception is that Maori are overrepresented in beneficiary statistics, but in Golden Bay those who identify as Maori make up 6% of the population, and represent 5% of the sole parent numbers and 7% of the unemployed (5.8% of total beneficiaries). In contrast those who identify as other European make up 6% of the population but contribute 9.3% of the sole parents and 12.7% of the unemployment register.(8.5% of total beneficiaries).

## Duration on main benefits



The Benefit system is a social safety net with the aim to support people in times of need. The duration table shows that in general people move through the benefit system, with only 34% of Domestic purpose beneficiaries having a duration of more than 4 years,

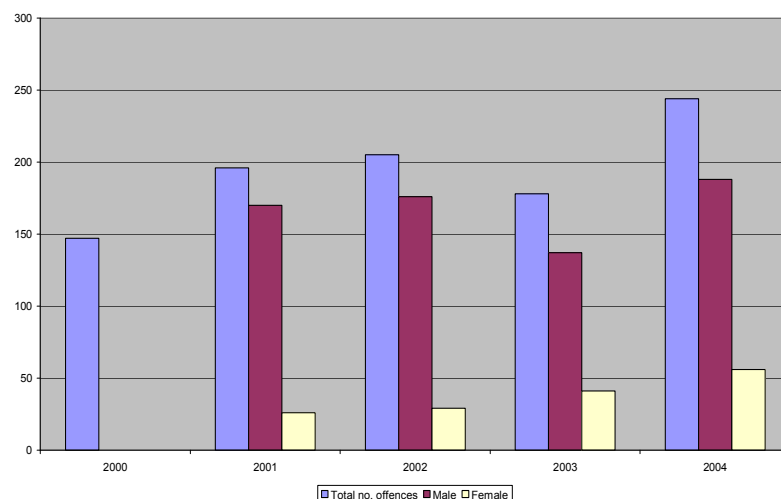
and 26% of unemployment beneficiaries. However the figure rises to 70% for invalid beneficiaries. This indicates that in Golden Bay the system is working well, but there is scope for n intensive support programmes to encourage greater participation, which is in line with the Work and Income regional strategic plan.

It is important to note that most beneficiaries in all categories declare some income.

## Safety and Security

Golden Bay is Part of the Tasman Policing District, ( Marlborough , West Coast, Nelson Bays). The Tasman policing District sets the highest crime clearance rate targets in the country and the Nelson Bays area, which includes Golden Bay, has the highest clearance targets in the district, and the Takaka police achieve or exceed these targets. Despite the increasing population there has not been a proportional increase in reported crimes. There are now four officers permanently based in the Bay.

## G.B Reported Crime by offender gender source NZ Police

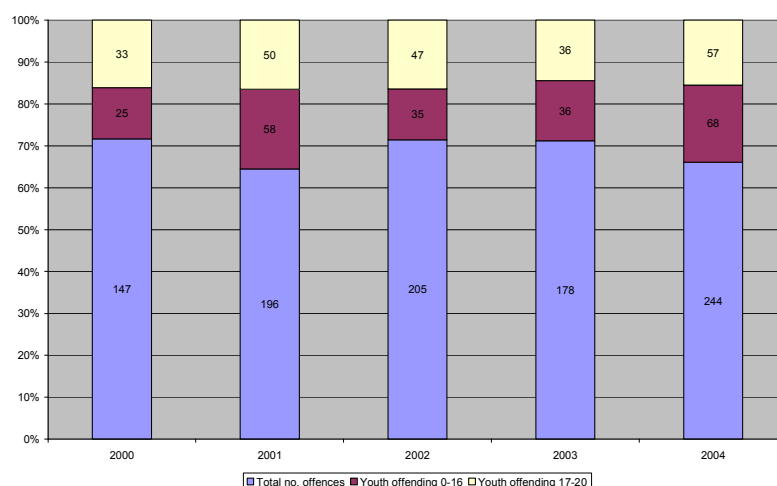


Crime rates peak over the Dec/Jan holiday period, but the year on year figures can be distorted by individual offenders who rack up a string of related offences. For example in Nov /Dec 2004 there was a mini-crime wave with 56 reported offences, predominantly petty

crimes, committed by a very small group of young offenders which almost single handedly accounted for the increase in reported crimes for the 2004 year.

## G.B Youth offending as a proportion of reported crime

source NZ Police



Young people are responsible for between 30 and 35% of reported crime, proportionally higher than the rest of the population. The most consistent trend is the increasing number of female offenders, who are now responsible

for over 50% of youth crime.

## G.B Reported crime by category

source NZ Police

Note there are more categories in the statistics, but these crimes cover those areas which most impact on individuals sense of feeling safe within their community

	2000	2001	2002	2003	2004
<b>Burglary</b>	5	23	7	10	31
<b>Theft</b>	19	23	16	22	21
<b>Assault-minor</b>	15	16	9	14	4
<b>Assault-grievous</b>	2	0	1	3	4
<b>Assault-serious</b>	11	8	11	8	9
<b>Domestic Violence</b>	6	4	4	1	2
<b>Willful damage</b>	9	19	14	14	21

Golden Bay remains a remarkably safe place to live with victimization rates well below national averages and high resolution rates especially for crimes of violence, with a 96% resolution rate in 2004. Not all crime is reported to the police, and anecdotally domestic violence is under reported.

Willful damage covers vandalism and although the number of reported offences have increased to 7% of reported crimes this is significantly lower than the Tasman average of 17%. No figures are available for the number of offences where alcohol is a contributory factor.

## Road Safety

The number of traffic accidents in Tasman is higher per head of population than the New Zealand average, but similar to other comparable local authorities. Nationally deaths and injuries from motor vehicle accidents have been trending downwards for the last 20 years, despite increasing numbers of vehicles on the road. Statistics on a per head of population basis do not have a lot of relevance because of the increase in traffic volumes over the summer tourist season. The Police now have a much higher profile on Golden Bay roads than in the past, and issued over 700 infringement notices to motorists in the 2004 -05 year. Although there has been a major cultural shift in attitudes to drink driving 109 people have been stopped for drunk driving in

the last five years, and there have been 19 alcohol related accidents investigated by the police. There was one fatality in 2001 and 7 other injury accidents, none in the last 12 months. Since the lowering of the drinking age 15 -19 year olds are responsible for 28% of drunk driving offences.

The Tasman District Council are currently reviewing speed limits on Golden Bay roads and have adopted a cycling and walking strategy, partly to improve safety for non motorists.

### **Education and training**

Golden Bay has a range of education options available, from preschool through to level 4 National Certificates. The Tertiary Education Commission funds Training Opportunities and Youth Training programmes through the Golden Bay Workcentre Trust, and there has also been growth in Industry Training and Modern Apprenticeships. There are also distance learning options that allow people to undertake Tertiary training through a range of universities and Polytechnics, without having to leave the Bay.

A range of less formal learning opportunities are funded through Adult and Community education (ACE), with evening classes in a range of subjects based at both Golden Bay High School and Collingwood Area School. There are also community classes run through the Workcentre and Golden Bay Arts Council, computer training through Seniornet and a well supported U3A group with 40 paid up members.

### **Early Childhood Education**

273 children access Ministry of Education funded early childhood education in Golden Bay. This is 80.5 % of children in the 0-4 age group There are three licenced centres and one MOE funded playgroup in Golden Bay. Some parents access more than one facility .

*Takaka Playcentre* is a parent run co-operative affiliated to the Nelson Playcentre association. The facility is licenced for 25 children but is currently going through the process of application to expand the building and the licence to cater for thirty children. There are currently 50 families involved with the Takaka playcentre, and there are 5 sessions per week, currently there are waiting lists for Monday and Wednesday. The roll varies and a drop off in the third term can be attributed to rural parents involved with calving. There is a push from central government to teacher led early childhood education but Playcentre is also about parents, many of those who work through the supervisors training going on to diploma study and continue to assist as either volunteers or teachers aides throughout their children's education. There is a charge to a maximum of \$55 term and this equates to about \$3.50 per session. Work and Income assistance is available to eligible families.

*Collingwood Playcentre* has a licence for 25 and usually has about 18 children present, from about 25 families. The centre runs three sessions per week and has had a fairly stable roll. Parent participation is an integral part of the Playcentre philosophy, and the social networking is very important. For families with children taking up positions on Dairy farms Playcentre is often the bridge into a new community.

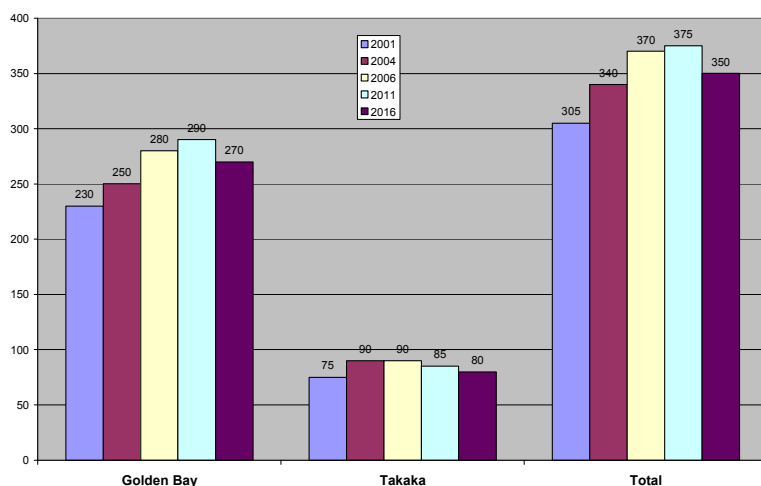
*GoldenKids Early Learning Centre* offers childcare facilities and learning programmes for children from 0 to 7 years old. Golden Kids is used by many working parents, and has 106 children from 98 families enrolled. The centre is licenced for 8 under twos and 30 over 2 year old children. It operates at capacity for most sessions with waiting lists for all morning sessions. Because

of the existing waiting lists it is hard to estimate the effect of increased childcare subsidies on use of the centre.

*Onekaka Playgroup* operates one day per week for a morning session between 10-12.30 Numbers fluctuate with 15 -20 families involved and a maximum of 30 children although sessions are usually much smaller. Onekaka is very informal but the social interaction for parents in a rural area is very important and “helps keep people sane”.

### Estimated number of 0 – 4 year olds 2001 -2016

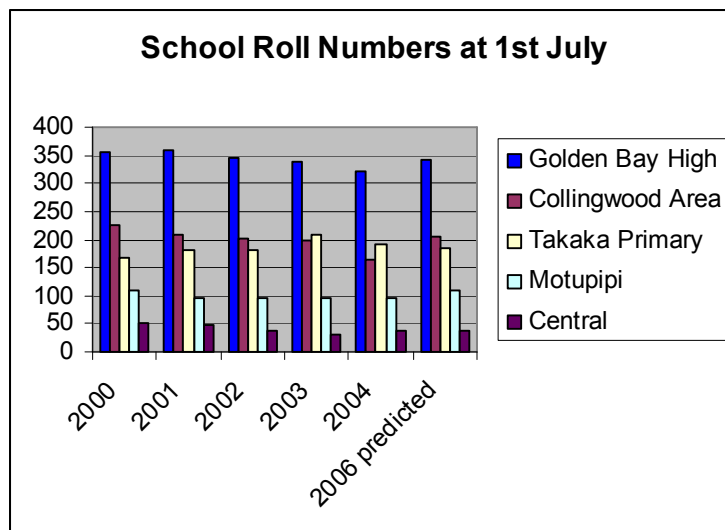
Source Stats NZ medium population estimates



Currently just over 80% of 0-4 year olds take part in some form of Ministry funded early childhood education. Playcentres and playgroups fill an important social role especially for the more rurally isolated, or new residents to the Bay. On current population estimates

there will be an increase of about 35 0 -4 year olds by 2011 and then numbers will fall back below current levels. There is currently an unmet demand for childcare, but Golden Kids has limited expansion options due to its location. However according to school records only 6 new entrants to primary schools in the Bay in 2004 had not attended an early childhood facility,

### Primary and Secondary Education



There are three primary schools all in eastern Golden Bay, Central Takaka, Motupipi and Takaka Primary .The main secondary school is Golden Bay High School with the western bay being served by Collingwood Area School (years 1-13)Changes in population and Ministry funding policy, combined with better

roads and transport have seen the closure of three smaller schools at Rockville , Upper Takaka and Mangarakau during the last 15 years. Motupipi is the only school to have initiated a zoning scheme, partly in response to increased development in the Pohara area, however this has not led to an increase in the primary age population.

All schools struggle with funding issues. The funding formula was changed in 2001 which lowered the rural weighting in the funding formula with the key components being the decile rating and the school roll. Schools are funded

differently for each year level with the largest student component funding for year 13 pupils

School	Decile Rating	Isolation Index	Operational Funding 2004 (2003 in brackets)
Takaka Primary	6	3.4	\$221,525
Motupipi	6	3.39	\$128,617
Central Takaka	7	3.31	\$65,487
Golden Bay High	6	3.39	\$676,977 (\$639,536)
Collingwood Area	6	3.97	\$384,094

(Source Ministry of Education – Decile rating range 1 = poorest school areas , 10 = richest school areas)

The decile rating is based on a socio-economic scale that incorporates parental income, occupation and qualifications and income support. The schools position is that parental qualifications have little relevance if they do not relate to the ability to earn income from that qualification, and consequently the decile ratings would be more realistically calculated at 4 -5.

For Golden bay High School each point on the decile scale make a difference of approximately \$16,000 to base funding levels. The operations grant is based on MOE predictions in July with a recalculation based on the actual roll in March. This can also lead to disparities in funding when roll numbers increase between March and July.

All Golden Bay Schools have to raise money outside their operational funding through fundraising, applying for grants, school fees, activity charges and in some cases fee paying overseas students. For Golden bay High this now accounts for 31% of the schools income up from 25% and this 25% - 30% figure is similar for all secondary schools in the Nelson Tasman region.

#### **Class Sizes in Golden Bay Schools – July 2004**

School	Largest	Smallest	Average
Central Takaka	25	24	25
Motupipi	24	16	20
Takaka Primary	31	20	25
Collingwood Area School	25	10	18
Golden Bay High School	34	22	28

This compares to a New Zealand average for secondary schools of 22.5 pupils per class identified in 2005 PPTA survey. Class sizes can change dramatically from year to year as roll numbers change.

The introduction of the NCEA system has worked well in Golden Bay with both GBHS (79.6%) and CAS (100%) results well above the national average (55.4%) at level 1 for 2004. At all levels achievement rates are on a par with Decile 10 schools.

Golden Bay secondary students can take part in STAR Courses, which are organized through NMIT to give an introduction to a range of career options, and Gateway funding enables students to achieve unit standards in the workplace, and builds links with employers.

The number of year 12 and 13 students is critical to the curriculum that can be offered , with supported correspondence packages being one option to widen the available learning options. Some senior pupils move to Nelson schools but this varies from year to year. This is more an issue for Collingwood where limited social choice is often a factor, with some students moving to GBHS for their senior schooling.

School leavers from the secondary system go onto a range of work and training options although there is an increasing trend for students to take a gap year before undertaking Tertiary training (9 out of 39 leavers in 2004).

There is no identifiable trend in reading scores of pupils coming into the High Schools, and similarly behavioural issues change from year to year. There is a Resource teacher learning behaviour (RTLb) who works in all the primary and secondary schools, to address behavioural issues with parents, and there is Counsellor available at GBHS, who also offers advice at CAS. One of the challenges in a small school community is the limited choice of peer groups, and this is even more of an issue for Collingwood students. This is reflected in behavioral 'norms' with different year groups raising different issues rather than any identifiable trend. Both GBHS and CAS have had students on stand down or suspension, but there is no statistical trend and figures have little relevance.

There were 79 referrals to the Truancy Officer for both Primary and Secondary schools for the 2003 and 2004 years, but these figures are more a reflection of repeated truancy by one or two individual students. This year there have only been five referrals.

GBHS manages the MOE funded Alternative Education contract for both secondary schools and contracts the GB Workcentre to manage the programme. This is by referral through the schools for pupils considered to be alienated from the school system, and there are up to four pupils on the programme at any time. Parents can seek exemption certificates from school for children between 15 and 16 years old if they are going into work or further training, there is no identifiable trend in the number of exemptions granted., with only three issued by GBHS in 2004, down from 7 in 2000.

Our schools are an integral component of the social and economic fabric of Golden Bay. They reflect the culture of the community, and both socially and academically meet the needs and expectations of most pupils and parents. All schools rely on strong parent support, and the bay is fortunate in the amount of volunteer time put in by parents to support school trips and activities. Funding constraints and fluctuating roll numbers will continue to challenge school management. This is more critical for Collingwood, where a smaller roll and low numbers of senior students limit the range of learning options, and if pupils move to access wider educational opportunities in their senior years this compounds the problem.

### **Home Schooling**

There is a strong Homeschool movement in Golden Bay with 3.5% of school aged pupils (31) registered as Homeschoolers with MOE. There is a group of approximately 20 families who meet monthly as parents and for activities. Homeschooling requires a strong family and philosophical commitment and approximately 50% are committed Christians but do not necessarily follow the Accelerated Christian Education Curriculum. A big issue for homeschoolers is the cost of Correspondence school units, which at \$800 for under 16 year olds is too expensive for many families.

### **Career pathways**

There are now more career pathways available in the Bay, traditionally students would have to move away to gain further qualifications but there are now options, albeit limited in some trades, that allow students to gain nationally recognized qualifications while living and working in the Bay.

*Modern Apprenticeship* (MAP) data is collated on a regional basis, with 1202 participants recorded by the Tertiary Education Commission in the quarter



ending March 05. There are apprentices and trainees in Golden bay in the following areas, Engineering, Building, Agriculture and Electrical. The Agriculture ITO (Industry Training organization) is very active in Golden Bay, with the Bay leading the region in Agricultural training participation, with 50 trainees. 50% are under 19 , with 8 MAPS, with trainees from level 2 up to diploma level.

The Building ITO has 11 apprentices signed up, with two under 19 . There has been an increase in older participants getting formal certification to meet building act requirements.

### **Training Opportunities and Youth Training**

TO and YT training is available through the Golden Bay Workcentre Trust. Approximately 35 students per year undertake training, with National certificates available in Computing, and Horticulture. The Workcentre also offers NCEA levels 1&2, and the National certificate in Employment Skills. There is a Foundation Course in Mixed Media and Design and depending on need courses have been run for Class 2 Drivers Licences, Possum Control and Caregivers.

Distance learning is available through many Universities and Polytechnics, although no data is available on the number of students in the Bay.

Golden Bay has a higher proportion of people with a post school qualification (34.2 %) than both Tasman (31.1%)and New Zealand as a whole (32.2%).

### Health Status

Most health data is collected on a DHB-wide basis and there is little meaningful data available as to how Golden Bay compares across indicators because of the small numbers involved. A Health Profile of the Nelson Marlborough District Health Board district was conducted in 2004 and does make comparisons across a broad range of health denominators. Generally, the district's health statistics are the same or frequently better than national data and it is probably reasonable to extrapolate that this would also apply to Golden Bay. However, there is such a wide range of socio-economic factors that influence health, disability and well being that high level comparisons, on a national basis, may have less relevance when applied to very small areas. For example as a region, there are slightly fewer male smokers than the national average - 25.8% compared to 26.25%, but within this there are differences between Maori and non-Maori and male and female.

Key national and district issues that will be of relevance in Golden Bay too are improving nutrition, increasing physical activity, reducing smoking, managing chronic illness and the implications of the ageing population. In this DHB district, child oral health status in NM is not as good as might be expected and compared to other parts of NZ.

The only significant variations to national norms are a higher percentage of fully breastfed babies at three months, less babies born at low birthweights and lower than expected hospitalization for asthma in 5 to 15 year olds.

As a region, NMDHB teen pregnancy rates are lower, at 20-25 births per 1000 women aged 15-19years), than the NZ average of 28-30. No comparable abortion statistics are available but based on NZ figures there would be an equivalent number of therapeutic abortions for each live birth.

There are more prescriptions written for Anti-depressants in the NMHB region than the national average, with 25 prescriptions per 100 people, compared to a national average 21.7 per 100 people. (this compares to 30 per hundred in the Canterbury DHB region. (Source Pharmac).

### Life Expectancy

Females have a longer life expectancy than males and there are variations between areas. Note that the lower figure for Takaka is modeled on the number of deaths registered in the meshblock which includes the GB Community Hospital, which may distort the figures.

	National	Tasman	Golden Bay	Takaka
Male	75.4	77.2	78.6	71
Female	80.7	82	83.7	76.4

## **Suicide**

Suicide is an indicator of mental health, and nationally more than three times as many males, and more Maori than European commit suicide. Nationally there is 1 death per 5500 males, There have been 10 suicides in Golden Bay in the last 7 years, usually averaging one per year, although 2001 was a bad year with 4 deaths. There have been two youth (under 24 years) suicides in last 6 years, which is less than the national average for this age group (1 per 5000 population per year). Youth suicides peaked nationally in 1995 and have been declining since. Golden Bay has higher number of suicides in the 40+ age group.

## **Disability**

Disability increases with age, with more than half (54 percent) of people aged 65 years and over reporting having a disability (in a NZ survey in 2001).

More men than women across each age band have some form of disability although possibly due to longer life expectancy there are more elderly (75+) women with disabilities. y is changes from age 65 trend will be reversed in later years given women's life expectancy is greater than men.

Indications are that over 90% of people with a disability still live at home although this is across all age groups and in later years there are increasing numbers who live in residential homes or similar.

There is no specific data for the district but national figures indicate that from 60 years onwards, disability rates increase.

### **Disability by age and gender**

<b>Age group</b>	<b>Male rate%</b>	<b>Female rate %</b>	<b>Total rate %</b>
<b>0 - 14</b>	<b>13</b>	<b>9</b>	<b>11</b>
<b>15 - 44</b>	<b>12</b>	<b>14</b>	<b>13</b>
<b>45-64</b>	<b>27.3</b>	<b>22.6</b>	<b>24.9</b>
<b>65-74</b>	<b>42.1</b>	<b>42.1</b>	<b>42.1</b>
<b>75-84</b>	<b>55.6</b>	<b>60.0</b>	<b>58.2</b>
<b>84+</b>	<b>91.7</b>	<b>84.8</b>	<b>87.3</b>

(Source Statistics NZ 2001 Household Disability Survey)

## **The health care system**

Health services are funded by a number of different agencies including the Ministry of Health, the Nelson Marlborough District Health Board, ACC and non-governmental agencies, with some user charges depending on age and assets.

DHBs are funded primarily on a population basis. The DHB then, either funds other organisations to provide services under contracts or provides services itself (usually secondary-level services). NMDHB has responsibility for most funding except for maternity, Public Health, disability services for 0-64 years and national contracts such as Plunket. There are no Golden Bay members on the DHB but there is representation on two of the statutory advisory committees including the Disability Support Advisory Committee.

Approximately \$4.5 million dollars is spent on health and disability services in Golden Bay. This excludes services provided to Golden Bay residents in other locations, such as Nelson Hospital. It also excludes designated health services which are delivered across the entire region and excludes specialist visits.

Despite major funding increases, the health budget is always challenged – hospitalisation is costly and consumes a major share of total health dollars. The government's New Zealand Health Strategy and Primary Health Care Strategy documents advocate a change of focus from one of treatment to prevention of illness including better management of chronic disease conditions in the community. This reallocates health dollars to primary health care services including health promotion and prevention initiatives to keep people healthy in the community and out of hospital.

Public health funding for disability support is sourced from the Ministry of Health in large part directly to the NMDHB which in turn contracts with a range of providers including the Nelson Bays Primary Health Organisation (PHO).. The PHO receives funding for enrolled clients and contracts with the local GPs to provide primary healthcare services.

### **Current Health Services**

The full range of DHB and MOH funded services currently being provided in Golden Bay are outlined in the tables at the end of this section.

The main health facility is the Golden Bay Community Hospital, a 15-bed unit comprising 3 maternity, 6 continuing care and 6 medical beds including acute, palliative and respite care. The hospital is also the base for the District Nursing Service which provides support at home for wound care, post operative support, home hospice and oncology patients. Physiotherapy, Occupational Therapy, Public Health, Well Child, Podiatry and Support Works services are also run from the hospital.

### **Birth from a Golden Bay Domicile**

( Where birth took place in a hospital or was admitted to hospital after birth outside hospital)

<b>Hospital</b>	<b>2000</b>	<b>2001</b>	<b>2002</b>	<b>2003</b>	<b>2004</b>	<b>Total</b>
GB Community Hospital	29	23	24	20	21	117
Motueka Community Hospital			2			2
Nelson Hospital	17	29	24	19	31	120
<b>Total</b>	<b>48</b>	<b>52</b>	<b>50</b>	<b>39</b>	<b>52</b>	<b>239</b>
Home births	10	9	23	22	n/a	

It is likely that the hospital will also be the base for proposed visits by the Mobile Surgical Bus, which will provide day surgical services for Golden Bay. Discussions are in process with the Ministry of Health to fund this initiative and to date the Ministry has indicated it will give the proposal favourable consideration.

### **Primary Medical Care**

Primary medical care services are provided by the Golden Bay Medical Centre which is staffed by 4 General Practitioners and practice nurses. The Centre also provides X-Ray services. The Golden Bay Medical Centre is contracted by the NMDHB to provide medical services at the Golden Bay Community Hospital.

Golden Bay is reasonably well served in terms of the number of GPs located here.

**Population number per General Practitioner.**

National Av	South Island	Nelson	Golden Bay	West Coast
1333	1217	1094	1245	1893

(Source NZHIS Workforce survey 2004)

The PHO receives funding for enrolled clients and contracts with the local GPs to provide primary healthcare services. Additional funding has recently been put into primary care by the government and this has enabled lower health costs for targeted age bands with free GP visits for under 6s, and varying level of subsidies for 6 -17 year olds, 18 -24 year olds and over 65s. There is a further level of subsidy depending on whether people qualify for a Community Services Card

**Fees for patients enrolled with GB Medical Centre**

Service	Under 6 years		6 -16 years		17-64 years		65+ years
CSC Status	CSC	No CSC	CSC	No CSC	CSC	No CSC	
<b>Surgery consultation</b>	Free	Free	\$17	\$17	\$40	\$55	\$30
<b>Normal hours callout</b>	Free	Free	\$30	\$30	\$53	\$68	\$30
<b>Weekend/after hrs surgery consultation</b>	Free	Free	\$20	\$20	\$44	\$59	\$34
<b>Weekend/after hours callout</b>	Free	Free	\$35	\$35	\$59	\$74	\$50
<b>ACC Consultation</b>	Free	Free	\$12	\$12	\$25	\$25	\$25
<b>ACC after hours</b>	Free	Free	\$18	\$18	\$34	\$34	\$34
<b>Practice Nurse Consultation</b>	Free	Free	Free	Free	\$20	\$20	\$10

There is a lower fee for 17-64 year olds who hold a high user health card. There is also a free Student Health Clinic four days a week held between 12.30 and 1.30 pm. A national survey showed that GP part charges are higher in the Nelson region than in other DHB areas

**Other Services**

There is an ACC registered Chiropractor and a number of independent providers of a range of complementary health and disability services.

There is one rest home facility, the Joan Whiting Rest Home at Collingwood, with 16 beds, run by a Community Trust.

For the size of population the range and accessibility of services is very good, although the cost of providing some services is high due to the small population. From January 1<sup>st</sup> 2006 the National travel Assistance policy will provide more support to people who have to travel to access specialist health care.

## **Mental Health Services and Support**

Golden Bay is fortunate to have the range and quality of Mental Health Services that it has. This has been an evolutionary process, with an innovative management team at Te Whare Mahana (TWM) having developed a good relationship with the DHB and established an integrated range of mental health services. The separation from Nelson has meant that devolved delivery is more cost effective than trying to provide services from “over the hill”. Te Whare Mahana now provides residential rehabilitation for up to 8 people, home based support, vocational training and employment support, and a Rural Mental Health Service providing a 24 hour service for psychiatric emergencies. The Community and Adolescent Mental Health Worker, who liaises closely with schools, also works from TWM with 8 contact hours contracted in the Bay.

This is very different from the Nelson model where the DHB is a direct provider of services. It is unusual for an NGO to provide such a range of services, but it is only because of the synergy between different contracts being managed by the same provider that such high quality and cost-effective service is possible.

Drug and Alcohol counselling services tend to be separate from other Mental Health Services, and used to be accessed from Nelson. Now the D&A service is based with the TWM outreach team and this again helps integrate services.

## **Integrated Health Service Proposal**

The TWM model demonstrates how the ‘bundling’ of a range of services under one provider can provide cost-effective services that would be unviable as stand alone contracts. It also demonstrates that it is possible to provide a wide range of quality services in a rural area separated from main centres.

The Integrated Health Services proposal is exploring the possibility of developing a new primary health care facility, incorporating the GB Community Hospital, the GB Medical Centre and the Joan Whiting Resthome. While existing services meet current needs, the Bays population is ageing and planning will need to occur quite soon to address current and future workforce concerns. In addition, the Joan Whiting Rest Home will require major expenditure to remain accredited, the Medical Centre Facilities are due for upgrading, and the Community Hospital is expensive to run in its present configuration. Combining these services has the potential to reduce costs while maintaining quality of services and could provide more opportunities to attract and maintain staff.

This proposal is still in its early stages and as yet there has been no cost benefit analysis to explore the financial implications of the proposal. Possibly the biggest challenge will be the mechanics of combining a DHB facility, a private business and two charitable trusts.

## SUMMARY OF SERVICES CURRENTLY BEING PROVIDED IN GOLDEN BAY (WHICH RECEIVE PUBLIC HEALTH FUNDING)

### NOTES TO THIS TABLE:

- Funding given refers to the 2004/05 year and is a general indication rather than being exact.
- Funding is excluded where it is difficult to 'unbundle', e.g. Public Health services, visiting specialist services (e.g. paediatrician, geriatrician)
- Other Primary care funding may come via SouthLink Health: Diabetes annual reviews, health activities, palliative care community-based, green prescription etc.
- Also excludes services provided to Golden Bay residents in other locations, e.g. Nelson Hospital

SERVICE	DESCRIPTION	PROVIDER & FUNDING
<b>PERSONAL HEALTH SERVICES</b>		
Ambulance services	24hour/7days emergency transport service, backed up by GPs through the primary response in medical emergencies (PRIME) contracts.	Provided by St John's Ambulance (volunteer staff)  Funded by Ministry of Health (MoH)
Primary medical services (GPs)  Primary nursing services (Practice Nursing)	24hour/7days service covering: <ul style="list-style-type: none"> <li>• Assessment, diagnosis and treatment of illness and injury.</li> <li>• PRIME service.</li> </ul> Daytime 5 day service covering: <ul style="list-style-type: none"> <li>• Nursing support for the practice population – health, education, immunisation, treatment.</li> </ul>	General Practitioners (4 working in 1 practice). Self employed. After hours – GPs share an on-call roster Practice nurses employed by General Practitioners. Funded by: <ul style="list-style-type: none"> <li>• Patient payments</li> <li>• NMDHB - GMS casual, immunisation, workforce retention, rural bonus = \$104,000 on 2004/05</li> <li>• NMDHB via PHO – capitation payments</li> <li>• NMDHB to Southlink Health</li> </ul>
Pregnancy and Parenting Education	Antenatal classes aimed particularly at first time parents.	4 courses per year are provided and funded by NMDHB
Golden Bay Hospital	Primary Maternity Services 24 hours/7 days services comprising: <ul style="list-style-type: none"> <li>• Community based antenatal and post natal support.</li> <li>• 3 bed birthing and postnatal facility at Golden Bay hospital.</li> </ul> General Beds - for patients requiring 24 hour nursing supervision and medical care for an acute illness, or care after early discharge from Nelson hospital; inpatient palliative care.  Community (District) Nursing 7 day service (reduced hours Sat and Sun) general and specialist nursing service (including oncology), provided at home or in the work place. On-call service for palliative care.  Home Help - Support with personal cares and household management for people recovering from an acute illness.  Allied health, e.g. Physiotherapy, Podiatry  Meals on Wheels  Visiting Medical Specialists - for the elderly (6 weekly) and children (6 monthly)	Provided by NMDHB.  NMDHB funds the hospital and associated services = \$1,275,300 in 2004/05  Nelson Regional Hospice Trust sub-contract to NMDHB.



Infant Welfare & Well Child Services	Baby health checks Nursing assessment of the health of pre-school children and new school entrants and a range of services provided for other children and their families on referral. Vision-hearing testing for pre-schoolers new entrants and year 7 school children.	NMDHB Public Health Nursing service NMDHB Vision Hearing Tester  Funded by NMDHB.
Dental services	Oral health assessment and treatment for: <ul style="list-style-type: none"> <li>pre-schoolers, primary school children</li> <li>adolescents through to the age of 18years.</li> </ul>	School dental services provided by NMDHB school dental service  Adolescent service and special dental benefits treatment provided by dentists from privately owned surgeries.  Funded by NMDHB = \$104,200 in 2004/05
Pharmacy Services	Dispensing of prescribed medications and pharmaceutical professional advice	Pharmacists from a privately owned pharmacy. Funded by: <ul style="list-style-type: none"> <li>Patient payment for items up to a set amount after which NMDHB funds.</li> <li>NMDHB – fees, medicines, NRT = \$706,400</li> </ul>
Laboratory Services	Specimens are collected by the general practice and transported to Nelson for testing.	Provided by Private Laboratories NMDHB funds.
Māori Services	Maori people can access all of the above services and the: <ul style="list-style-type: none"> <li>Disease management service to support people and their whanau to manage chronic illness such as diabetes, asthma and heart disease.</li> </ul>	Provided by Te Awhina Marae NMDHB funds this service as part of the Motueka contract – service to GB as required..

<b>MENTAL HEALTH SERVICES</b>		
<b>SERVICE</b>	<b>DESCRIPTION</b>	<b>PROVIDER</b>
Primary Mental Health	Assessment, treatment and supervision for people with mild to moderate mental illness.	Provided by GPs Patient payments with NMDHB subsidies as detailed in the text above.
Secondary mental health services	Te Whare Mahana: Community Residential Services; Home Based Support Services; Adult Planned Respite; Advocacy/Peer Support Consumers; Rural Community Mental Health Service; Employment and Education Support; Dialectical Behaviour Therapy  Alcohol and Drug services Access to Nelson-based services, including child and adolescent.	NMDHB funds.  TWM = \$743,900 for 2004/05

<b>PUBLIC HEALTH SERVICES</b>		
Health Promotion	Activities to promote good health.	Funded by Ministry of Health Provided by NMDHB
Health Protection	Activities to protect the health of the community (e.g. clean air, water supplies and food safety).	Funded by Ministry of Health Provided by NMDHB
Communicable Disease Control	Following up contacts of people diagnosed with notifiable illnesses.	Funded by Ministry of Health Provided by NMDHB
<b>DISABILITY SUPPORT SERVICES</b>		
Health of Older People	<p>Continuing Care (hospital care) - 24 hour/7 day residential care for those people with a need for ongoing nursing care.</p> <p>Rest home care – 24 hour/7 day residential support for the elderly:</p> <p>Carer support</p>	<p>Providers:</p> <ul style="list-style-type: none"> <li>• Golden Bay Community Hospital (hospital level)</li> <li>• Joan Whiting Rest Home (rest home, respite)</li> <li>• Various home support providers</li> </ul> <p>Funding from:</p> <ul style="list-style-type: none"> <li>• Residents self-payments depending on eligibility for subsidies.</li> <li>• NMDHB funds: AT&amp;R; aged residential care = \$361,800; Rest home care; residential respite; home support = \$305,700</li> <li>• MoH funded clients = \$25,000</li> </ul>
Needs Assessment Service Co-ordination	Assessment of disability support needs and the co-ordination of the services required to meet these needs.	Provided by Support Works (NMDHB); funded by MoH.

(source NMDHB)

## **Community Support Services**

### **Heartlands Services**

The Heartlands initiative was established by Central Government to provide more direct access to government services. The Workcentre Trust manages the Heartlands contract in Golden Bay, and by adding additional PA hours the Heartlands Office in the community centre is open 6 hours a day for five days a week.

Eleven government agencies take bookings through the Heartlands office, and an average of 190 'customer transactions' take place each month. An evaluation of the service in 2004 showed high levels of satisfaction with the service. The Heartlands service also provides support for the monthly Community and Whanau meetings and other meetings at the Community Centre.

### **Golden Bay Community Workers**

The GB Community Workers are a social support and advocacy service for Golden Bay, based in the Community Centre. The agency has evolved according to perceptions of community need at different times, so there are a wide range of roles and services. The Community Workers main focus is on families and is funded for some services through the MSD Strengthening Families programme, they work closely with Homebuilders, with both services based at the Community Centre. The Community Workers work closely with CYFS with part funding to provide support and counseling services. The Community Workers provide advocacy and budget advice services, and family support through a range of initiatives including a women's education programme and a parenting programme. In 2004 they were funded by Child Youth and Family Services to develop policies and procedures and start a strategic planning process. Some clients are referred through Work and Income, and the Police. A range of community projects have started from Community Workers initiatives, including the leasing of the Cobb houses and the GB Food Bank.

The Community Workers have developed good networks with other social support agencies through the Community and Whanau network, Public Health nurse, Support Works, and the Rural Mental Health Service. Although both Community Workers work more hours than they are paid for the organization covers the cost of much of its work through grant funding.

### **Recreation Co-coordinator**

The Recreation Co-coordinator is a part time position with the Community Workers, and is responsible for organizing the TDC funded Boredom Busters holiday programmes, some recreation activities and community events such as the Mardi Gras and summertime programme.

### **Student and Family Support Worker**

The Student and Family Support Worker is a Community Workers initiative. This is a new position established in early 2005 with private funding which will be evaluated after a 12 month trial period with funding potentially available for another 12 months.

The position operates on school terms with the first term identifying community expectations for the position including the collation of 220 responses to a survey on family and youth issues. The worker is developing links to all schools and is now concentrating more on early intervention

working with groups of children and parents rather than individuals. There is a good liaison with the church youth worker working together on some outdoor activities in schools. Collingwood School has made active use of the position to address some behavioural issues.

### **Homebuilders**

Homebuilders is a CYFS funded Nelson agency who employ a field worker in Golden Bay for 10 hours a week (same hours as Motueka) to work more closely with families who may be referred by other agencies or self refer. Support is available for 12 months, although for some families this can be extended.

### **Food bank**

The food bank is run by the Community Workers, and averaged 12 clients per month in 2004, with highest demand in January and March. Not all people who apply for food parcels are local. People who apply more than once are referred to the Budget advice service.

### **St Vincent de Paul**

St. Vincent de Paul is a national charitable organization with representatives in Takaka. It works closely with the Community Workers, and is able to make grants to cover basic needs such as firewood, car registrations, power phone and food bills, and some basic household items such as washing machines. All clients receive budget advice, and support is available to low income families as well as beneficiaries.

### **Informal Support Networks**

One of the benefits of living in a small community is the extensive range of social support networks available. Playcentre and playgroups are vital points of social contact, especially for more rural families. Rural Women (ex WDFP) fill this role for some older rural residents.

The various Churches and church groups are a strong part of the social fabric of the Bay and assist with counseling, support and budget advice. The Catholic, Presbyterian and Anglican Churches take it in turns to provide the 4 volunteer drivers required each week to deliver the meals on wheels service. Similarly the volunteer drivers for 'Wrinklies Express' enable mobile elderly to get to appointments in Nelson. The Senior Citizens, RSA and the Masons all actively assist with supporting their members.

There are approximately 150 different sporting, social, recreational and advocacy groups active in Golden Bay, all filling different social needs.

### **Youth Worker**

Three churches have established the Golden Bay Adventures Trust which employs a youth worker to organize a range of challenging outdoor activities. A recent 'commando adventure' event attracted 70 participants. The youth Worker also takes school students and alternative education students on outdoor activities.

### **Youth Transition Worker**

This part time position, contracted through MSD is based at the Workcentre and gives support and advice primarily to young people who are more 'on the street' assisting them with the transition from school or unemployment to the workforce or training. It involves helping with housing and employment, and

working with young offenders to sort out fines , court appearances and community work issues.

### **Youth Issues**

There are pluses and minuses to being a young person in Takaka, while there may be less facilities there are also opportunities that are not available to youth in urban areas. Having nothing to do is not a unique complaint from Golden Bay youth. There are a wide range of activities for young people to engage in if they choose, and the major issues relate to isolation. There is a very limited choice of peer group, especially for young people from the Collingwood side of the Bay, and with no public transport young people have to rely on parents or friends for transport to engage in social activities.

Providing dedicated facilities for young people is a challenge, firstly it is a costly exercise in a small community and secondly there are still transport issues for those who wish to attend. Secondly with limited peer choices it is often hard to manage facilities to avoid 'colonization' by particular groups.

The majority of young people make the most of what the Bay has to offer, participating in sports and activities through the schools, an active kids and teen theatre group, and making the most of what ever else happens, festivals movies, bands and just hanging out. There are young people who engage in antisocial behaviour, but this tends to be a small group who are often repeat offenders.

There is no specific Golden Bay research on young peoples attitudes and behaviour. However 251 year 9 -13 students from four schools in the Tasman region were surveyed as part of the Youth 2000 National Secondary Schools Youth Health Survey. 24% of the respondents identified as Maori, Pacific Island or Asian which is demographically very different to Golden Bay youth, but it does give some insight into behaviour and attitudes.

Most of the young people surveyed felt they were in good health (male 96.1%, female 95.8%), that their parents cared about them (m.90.4%, f 93.0%), they either liked school or thought it was okay (m 78.0% , f 84.5%) and adults at school cared about them (m 86.1%, f 86.5%). More than half (m 53.6, f 67.8) had a regular part time job.

There were similar high percentage responses to questions about feeling safe in their neighbourhood (m 87.3%, f 90.7%) and at school (m 77.8%, f 83.8%).

In general families were considered supportive although only just over half of those surveyed felt they had enough time to spend with their parents, but nearly all respondents talked with their parent about how school was going , and over 95 % of parents felt it was important that their children did well at school.

17.1% of young men and 26.5% of young women were sexually active, but of those only 78.6 of males and 64.6% of females used a condom to prevent sexually transmitted infections which is a concern with the high rate of Chlamydia in New Zealand.

About 10% of the students surveyed smoke cigarettes daily (m 9.5%, f 7.9%) and 10.4% of males and 5.4% use Marijuana on a weekly basis. However the recreational drug of choice is alcohol, with 24.5% of males and 17.8% of females drinking on a weekly basis, with 43% having had a binge drinking session in the previous four weeks.

Of more concern is that 26.3% of males and 29.5% of females had ridden in a car with a potentially drunk driver in the previous four weeks, and 44.8% of males and 35.7% of females had been in a car driven dangerously in the last month.

## Housing

The availability and affordability of housing in Golden Bay has major social and economic implications. The Nelson /Tasman region has been at the forefront of the latest housing boom, with median house prices trebling over the three year period 2002-2005 and, peaking in last quarter of 2004. Since then prices have dropped back slightly.

A report into housing needs in Golden Bay, prepared by Jenny Randall for the Golden Bay Workcentre Trust and released in October 2003 identified that –

There was a lack of affordable rental accommodation, some rental accommodation was of low standard, and there was no security of tenure.

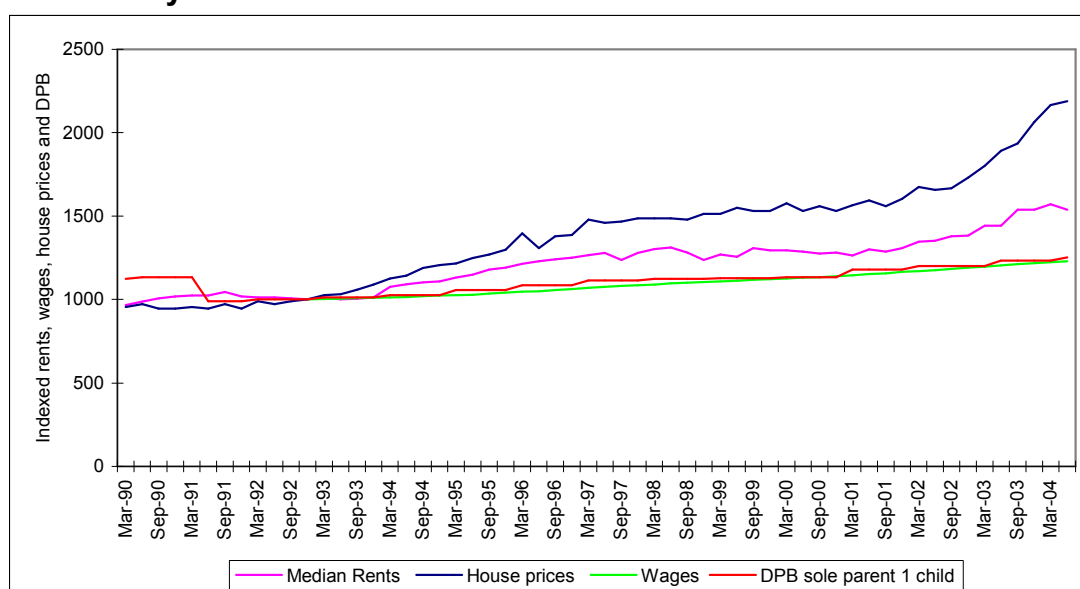
Rapidly rising house prices were excluding first home buyers and thus put more pressure on the rental market. Low average incomes coupled rising prices had lead to decline in home affordability.

There was full occupancy, and waiting lists for the limited amount of Social housing available.

Following on from this The Workcentre received funding for a feasibility study into the establishment of third sector housing. This report “A Social Housing Trust in Golden Bay a feasibility study” prepared for the Golden Bay Workcentre Trust by Keith Preston of Sustainability Ltd. has just been completed (Aug 2005). It confirmed the findings of the 2003 report and found that in some instances the situation was worse, as house prices and rents had continue to rise yet wages had not increased. The main issues that the feasibility study has identified are

- Affordability
- Lack of security
- Impact on jobs and the local economy

## Affordability



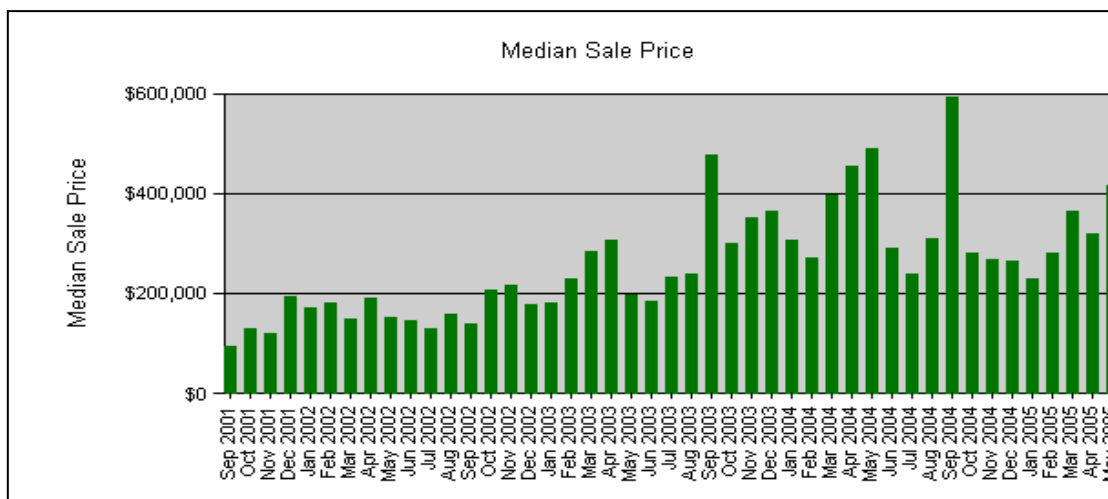
Source: Social Housing Feasibility Study Preston 2005 compiled from REINZ, MSD, Stats NZ, & Tenancy Bond data.

The growing gap between wages and house prices is a national trend although the Nelson-Tasman region has experienced one of the sharpest declines in house affordability. 25 years ago the Average annual wage represented 31% of the average national house price, this has declined to 15% in 2005.

	NZ Average House Price	NZ Average Wage
<b>1981</b>	\$41,000	\$12,600
<b>1999</b>	\$187,000	\$33,400
<b>2005</b>	\$260,000	\$39,000

Source Hansard 20.5.05

The AMP Home Affordability Index combines median house prices, average weekly earnings and interest rates on a regional basis. The February 2005 report showed a 17.4% decline in home affordability in the Nelson/Marlborough region (including Tasman) over the previous twelve months. Nelson /Marlborough is the second least affordable region in NZ after Auckland.

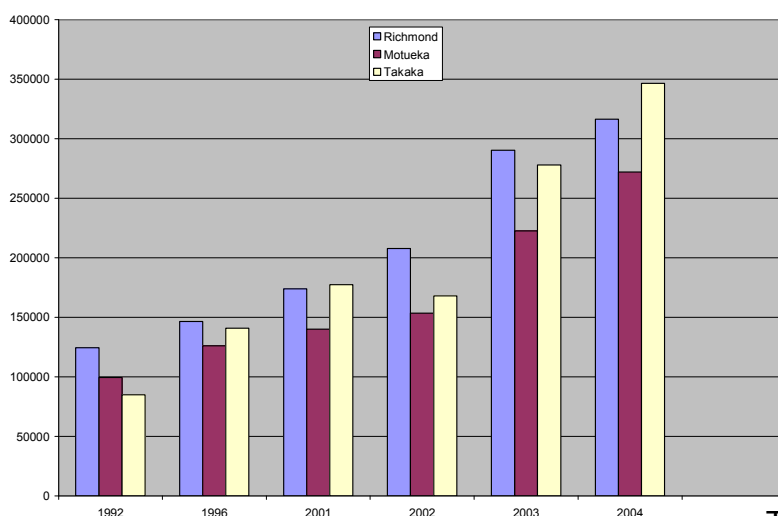


**Trend in Golden Bay Median Prices 2001 – 2005**

Source REINZ

Median prices have risen substantially, even though this has been driven by the sale of higher value coastal properties, the trend has flowed through to the lower end of the housing market. There are currently only four houses out of over 180 on the market (Aug 2005) costing less than \$200,000, and no sections for sale below \$100,000.

**Relative median Prices in Tasman District** source REINZ



Home ownership rates have declined across New Zealand from a high of 73.8% in 1991 to 67.8% at the 2001 census. Tasman district has a significantly higher rate of home ownership at 75.8%. The rates in the Bay are lower, 74.7% in the Golden Bay area unit and 71% in Takaka. The median

price data illustrates the relative change from Golden Bay being the cheapest area in the district to the most expensive, driven by lifestyle and retirement migration not linked to employment.



To purchase a property at the lowest end of the market - \$200,000 would require a \$10,000 deposit (5%) and a weekly family income of \$1000 (\$52000 per annum) before tax. This is over twice the average Tasman District wage. This means that the only people able to afford the average entry level priced house currently \$220,000 - \$240,000 are high earners, families with at least two incomes or people that already have a house they can sell.

Tenancy Services Market Rent Information combines figures from Golden Bay and Motueka, and only covers those properties where a bond has been lodged.

#### **Market Rent Information March 2005 –August 2005**

<b>Bedrooms</b>	<b>Dwelling</b>	<b>Numbers let</b>	<b>Average Rent</b>	<b>Median Rent (\$)</b>
2	flat	30	186	185
1	flat	26	133	130
4	house	15	256	250
3	house	86	230	240
2	House	35	208	200

Source Dept Building and Housing Tenancy Information Services

Median weekly rent ranged from \$130 for a one-bedroom flat to \$240 for a three-bedroom house and increased by \$10 per week between January 2004 and January 2005.

52 rental properties were advertised in the GB weekly from January to April 2005, (at rentals ranging from \$70 for a housebus to \$350 for a four bedroom house) and there are over 180 properties on the market through Real Estate agents. *There is no shortage of housing, the problem is one of affordability and security.*

#### **Lack of Security**

The rental market is complicated by the holiday season, with some rental properties requiring tenants to move out for 4 -6 weeks over the summer season, when properties can be rented for \$120 – 200 per night. Both a private agency and the Visitor Information centre have properties to rent on their books, mainly on behalf of local owners. Not all of these properties are available to rent at other times of the year. Traditionally houses for sale have been available to rent but with an active property market and a median selling time of less than 60 days there is little security with Landlords only required to give 42 days notice.

There is limited Social Housing available, Housing New Zealand Corporation have 5 general properties and TDC have 4 pensioner flats – there are waiting lists for both organizations. HNZN Community Housing also leases 2 houses to Te Whare Mahana, and 4 small flats in Castle Place. There is one flat in this complex available for emergency accommodation / respite. HCNZ has also purchased a house to lease to the Workcentre for Youth at Risk.

Abbeyfield Golden Bay are intending to build a ten unit home in Takaka, on land donated by the dairy factory. For the scheme to be viable full occupancy is required, the Motueka scheme is not full, and the comparatively small population in the Bay makes the impact of slight fluctuations in demand more of a challenge. There is a very limited stock of pensioner housing. Superannuitants on low incomes or with no property assets will be dependent

on the private rental market, or if they own property may suffer problems of under-occupation of larger dwellings, isolation or inadequate care.

There are some tied properties in Golden Bay, many farms provide accommodation, there are four Ministry of Education houses for teaching staff, one Police house and . Fonterra owns 5 houses rented to factory staff.

### **Impact on the local economy**

The business and community sectors are concerned about the difficulties facing young people and their families who want to live in the Bay and have little prospect of purchasing their first home. Concern has also been raised about people approaching retirement, who have always rented, and who will have insufficient income and savings to stay in the Bay.

Most demand on housing comes from mid December to late January as tourists pay premium rates to rent in the Bay. This is also the period when businesses need most casual staff to service the tourists. Several businesses reported that this year they could not accommodate all their staff and that they had difficulty attracting staff because it was too expensive for them to rent, or there simply was no available accommodation.

Affordability of rental accommodation, lack of secure rentals and the high cost of housing relative to wages is affecting the labour market. Some Employers are having difficulty in attracting and retaining staff. The Police, Dept of Conservation, and the High School have all reported potential employees turning down offers of employment because of the relative cost of housing compared to other areas.. Anecdotally there are reports of families moving out of the Bay to areas with lower accommodation costs.

### **Cost of living**

Golden Bay is not a cheap place to live. There may be less to spend money on than in urban areas, but in general wages are lower. Entry level housing is cheaper in both Nelson and Motueka. Rental costs are marginally cheaper depending on the size of dwelling, however the median rent for a three bedroom house at \$230 is the same in Golden Bay as Central Nelson, and apart from Takaka township accommodation supplement is paid at a lower level.

Transport is a major component of the cost of living in a rural area. With very limited public transport, mostly seasonal services geared to the tourist market people are very reliant on private motor vehicles. Delivery costs make fuel more expensive in Golden Bay.

### **Pump prices for Fuel – September 2005**

	<b>91</b>	<b>96</b>	<b>Diesel</b>
<b>Takaka</b>	159.9	164.9	110.0
<b>Nelson</b>	152.9	157.9	101.9

A recent survey undertaken by the Chatham Islands Heartland Service Centre compared the cost of 51 common grocery items from Supermarkets in Waitangi,(on the Chathams) Timaru and Takaka. Takaka was chosen because as with the Chathams freight adds to the cost of living. Please note

this was not a scientific survey and had no adjustment for items on special, or different brands, but it does give some idea of relative cost.

Waitangi Store	Timaru New World	Takaka Supervalu
292.70	177.77	210.78

### **Community Connectedness**

There are few formal measures of what constitutes a healthy community, but the relationships and interactions within a community are what gives it a unique flavour and contribute to an overall sense of health and well being. Social connectedness also includes collective activity where people engage collectively to achieve shared goals that benefit each other and society a whole.

### **Phone and Internet access**

Access to a telephone or the internet allows people to communicate more freely with each other and is used as a measure of connectedness in the MSD Social report. The 2001 census indicates that nationally 97% of the population had access to a telephone, and 41% had internet access. The rapid introduction of mobile phone technology and the relative affordability of computers makes this data of little value, however as this technology becomes more universal it increases the disadvantage for those without access to it. There is still not universal cell phone coverage in Golden Bay, and some rural internet connections are still very slow. Broadband /wireless coverage is not yet available throughout the Bay, and there is still a cost barrier to those on lower incomes.

### **Democracy**

Golden Bay residents consistently register the highest participation rates in the Tasman District at local body elections.

### **Voter participation by TDC Ward**

Year	NZ Average	Richmond	Motueka	Moutere/Waimea	Lakes/Murchison	Golden Bay
1995	-	66.2%	66.9%	61.0%	65.5%	74.6%
1998	-	62.6%	62.0%	62.0%	72.7%	72.1%
2001	50%	59.84%	58.25%	55.67%	51.9%	67.76%
2004	46%	51.68%	51.26%	49.61%	44.35%	67.25%

(Source Dept Internal Affairs)

This interest in democracy and community is also shown by attendance at TDC public meetings, and the number of submissions received on council consultation papers.

## Sport and Physical activity

### Physical Activity Participation Rates

	All NZ%	Tasman %
Active young 5-17	68	78
Inactive young	32	22
Active adult 18+	68	71
Inactive	32	29

(Source SPARC note SPARCS Tasman region includes Kaikoura and Buller)

There are high participation rates in all age brackets averaging 7.8 hrs sport and active leisure per week.

### Sport participation

Sports “snapshot” of winter sport participation not including school activities or coaches. All except basketball and table tennis on Saturdays

Netball	108 youth 72 adults
Hockey	90
Rugby	180
Soccer	100 youth 30 seniors
Bowls	30+
Golf	35
Badminton	25
Table Tennis	18
Squash	35
Basketball	60

Sport plays a big role in the social life of the community, with school facilities being vital for hockey, Soccer, Netball and Basketball. As well as the physical activity there is a lot of social interaction between participants, parents and supporters.

### Cycling and walking

An increasing proportion of the Golden Bay workforce travel to work by car between 41% and 48% of the workforce, with the biggest increase in the Golden Bay Rural meshblock. The number of commuters from Pohara and Takaka township has dropped, reflecting the increase in superannuitants in both areas.

Golden Bay has a strong cycling lobby, however across the Tasman district the number of people cycling and walking to work fell by 36 % between 1991 and 2001. In Takaka township 24% of commuters (135 people) walked or cycled to work on census day 2001, which highlights how having residential areas convenient to employment locations can reduce vehicle use. There is no data on the number of people who walk for exercise but anecdotally the numbers have increased and are especially obvious around the Takaka township in the early morning.

### Community Volunteers

Golden Bay runs on volunteers, there are vast array of community initiatives and activities that depend on volunteer input. Some essential services such as the Volunteer Fire Brigades in Takaka and Collingwood, the St Johns Ambulance Service and Search and Rescue are totally dependent on volunteers. There are also over 150 other groups and organizations in the Bay that rely on volunteers, from hall management committees to revegetation projects, from Plunket to Dog trials the donation of countless hours of volunteer time is the social glue that binds the community together.

## **An interpretation of the findings of the Golden Bay Social Report**

This is an assessment based on analysis of the available data and discussions with community members and agency representatives.

Golden Bay in 2005 is a fortunate community, it has a diverse economy with historically low unemployment, and whilst life may be more of a challenge for some individuals and families there are no areas of entrenched deprivation. It is a safe place to live with low reported crime and high resolution rates. The schools provide quality education with results that exceed similar decile schools in other areas. There is a remarkable range of health and disability services with access to specialists when required, and there is a good range of social services and support networks. The Bay has an active community that engages in local issues and commits countless volunteer hours to support community services and initiatives.

At current expenditure levels over \$18.5 million of central government funding is provided annually to support health, education and social welfare (including superannuation) in the Bay. There is also significant expenditure for the Police, the Department of Conservation, and a range of contracted services such as Heartlands, Strengthening Families, and Tertiary Education Commission Training programmes. Spending on regulatory services includes the Ministry of Agriculture and Fisheries, and the Department of Labour, and Housing New Zealand is expanding its portfolio in the Bay. There are also central government subsidies provided through the Tasman District Council for roading and some capital works such as sewerage schemes.

It is sometimes easy to take some of these services and functions for granted and focus on what is not here, rather than acknowledging what is in place. There will always be a tension between desired levels of service, what people are prepared to pay as ratepayers or taxpayers, and government priorities. However as a small predominantly rural community Golden Bay has a strong social infrastructure.

Many of the issues facing the Bay are not unique to this community, an aging population living longer, increased demand on health services, the social implications of the increase in house prices and higher transport costs are having an impact across the country. How Golden Bay as a community plans for, and manages these challenges will define our future, however it is probably unrealistic to presume that large amounts of central government funding will be available, and we need to consider innovative community based solutions that can make the best use of existing funding.

The diversity of the local economy is a real strength, although tourism is probably the sector most vulnerable to changes in the global market. The growth of tourism has brought benefits but is also creating a seasonal economy with some tourist businesses already closing for the quieter months. This has flow on effects on other businesses.

There is very little capacity in the labour market, already some seasonal businesses are increasing wages and taking staff on earlier. There is neither the workforce nor housing available to service any labour intensive new industry. The growth in one person small businesses between census periods indicates this is the area with most potential for future employment growth, yet current government programmes only offer support to those already in business or registered with Work and Income. Expanding the eligibility criteria for business training and advice to include people outside the benefit system or already in employment would help to foster these entrepreneurial initiatives.

Golden Bay is at a crossroads - it is a desirable place to live, yet the very qualities that make it attractive are also forces for change. There is a danger that the high cost of housing will make the Bay a predominantly lifestyle / retirement community, yet it is the diversity of the community that is one of its attractions. Population predictions show an aging community, with a doubling of the percentage of people over 65 to over 28% of the population by 2026. This also has major implications for community services that rely on volunteers. Currently there are lots of active elderly, but as this cohort becomes less physically able to cope in existing dwellings there is insufficient social infrastructure to support them. The Abbeyfield development will help manage the transition from independent living, but there are limited Rest home beds, with the Joan Whiting home facing increasingly stringent audit requirements. Any rest home with less than 25 beds struggles, so with only 15 beds Joan Whiting is vulnerable. The Integrated Health Services Project is already scoping future options that may provide a cost effective solution. Home based care services are already stretched, with a predominantly part-time workforce and high travel costs already making this a less attractive employment option.

At the other end of the age spectrum there is a bulge in the number of 0-4 year old children, peaking in 2011. This will place more pressure on an already stretched early childhood sector, with no vacancies currently available at Golden Kids. The issue is how to best manage this population bulge (an increase of 35-40 children) for a five to six year period before numbers start to decline. Funding applications for a kindergarden facility have been declined, this is a competitive process and other areas are considered to have greater needs, but are there other more creative solutions that would address both early childhood education, and the childcare needs of working parents. With a decline in the number of 0-4 year olds to less than current numbers from 2011 is a major capital investment in a new facility the most effective use of limited funding?

An overheated housing market has developed with no linkage between wages and property prices - this makes it very difficult for young people to establish and maintain a livelihood. The Golden Bay Housing Trust has been formed to develop social housing and is on track to make a bid to the Housing Innovation Fund for the 2006 financial year, however building sufficient housing stock will be a slow process. Housing New Zealand has also indicated that it is looking at expanding its housing portfolio in the Bay.

Currently the cheapest housing in the Bay is in Upper Takaka and the Aorere valley. Increasing petrol prices might make this an unsustainable option for those on low incomes trying to enter the housing market. TDC's Growth Options for Eastern Golden Bay identifies land that could be developed for housing closer to Takaka township, and that there might have to be some trade off between affordability, and development on productive land close to existing services.

It does cost more to live in Golden Bay, with a premium for fuel and food etc. Travel also absorbs time and money for Golden Bay residents having to travel over the hill to meetings or appointments (meeting start times seldom reflect travel time), and for agency representatives to come to the Bay. The increasing cost of petrol and the time involved in traveling over the hill supports the cost effectiveness of devolving as much service delivery as possible to Golden Bay agencies.

For most people, most of the time life in Golden Bay is alright – there are ups and downs but friends, family, church groups, the School Counselor, the Medical Centre, the Rural Mental Health Team and often Work and Income help people to manage through. For some people some times, and a few people more often, personal or financial crises seem overwhelming and the Community Workers are able to provide support.

Te Whare Mahana has shown how by providing an innovative and integrated approach to service provision what would be unviable as stand alone contracts can be bundled to create a sustainable service. The appointment of the Golden Bay Homebuilders Fieldworker as the Strengthening Families Co-coordinator based with the Community Workers with 18 hours between the two positions is an example of how a sustainable social support agency can develop. There are a range of people working with youth in the Bay, and youth representatives have asked for more activities, this would fit with the existing Recreation Co-coordinator position.

We need to acknowledge that relative to many other rural areas Golden Bay residents have access to a wide range of quality services. In an ideal world there are initiatives and programmes that would enhance well being, but with our lower population and relative lack of deprivation Golden Bay is unlikely to be top of the priority list. As a community we will still require well researched and supported applications for funding through Lotteries, the Community Trust and other philanthropic providers.

We have a tradition of developing local solutions to local issues, and we need to build on this spirit of self reliance by looking beyond central government support.

**September 2005**

## Information sources and acknowledgements

*In the process of compiling this report I processed a vast array of information. The challenge was in trying to separate what was relevant to the Social Health of the Golden Bay community. As random examples there are less Pokie machines per head in Golden Bay (1:145 adults) than the New Zealand average (1:118). Does this mean that gambling is less of a problem here, or is it just that publicans have chosen a particular number to install that will fit in their premises? Do 2887 active library users mean we are more literate, or does it just reflect a higher number of retired people? I have tried to access information that is relevant to what I believe are major social concerns, Employment, Health, Education, Housing, Crime and Community Social Services. I have no doubt that there are aspects that I have missed, and there are many other factors that impact on the community, both regionally, such as the current TDC planning reviews, and globally such as the price of oil and climate change. However I hope this document will provide a sound platform to debate what are the most effective ways to enhance the social health of Golden Bay.*

*I would like to thank my colleagues at the Workcentre for all their help, members of the Golden Bay community who have assisted in providing information, and also Lynne Williams at MSD, Richard Munt and Denise Kidd from Family and Community services and Jim Hurring and Claire Mackenzie from Nelson Marlborough District Health Board for their critique and support.*

*Mik Symmons Golden Bay Workcentre Trust September 2005*

Source Data obtained from:

- Statistics New Zealand NZ census of population and dwellings 1991, 1996, 2001 and updates
- Degrees of Deprivation - NZ Atlas of Deprivation
- Tasman District Council – Rural Futures, Urban Growth Options, Cycle and Walking Strategy, LTCCP
- MSD Social Report 2004
- Nelson Marlborough District Health Board
- Works Consultancy -GB Rural Development Study
- Ministry of Education
- Golden Bay High School
- Golden Bay Medical Centre
- Golden Bay Community Workers
- Community Health Group
- Golden Bay Community and Whanau network
- Golden Bay Workcentre Trust - Golden Bay in 2022?, Clifton to Tata Survey, Housing needs in Golden Bay, Social Housing Feasibility Study.
- Te Whare Mahana
- Tasman District Police
- REINZ
- Work and Income
- Dept Internal Affairs
- Nelson City Council - Quality of life in Nelson
- Migrant and refugee services for Nelson / Tasman
- Kaikoura Social Wellbeing Report
- East Coast Social and Economic report
- Heartlands Services
- Tenancy Services
- Department of Internal Affairs
- Nelson Mail
- GB Weekly
- SPARC